



2019 Annual Report





Girl Scouts of the USA
420 Fifth Avenue
New York, New York 10018

This report covers services during the fiscal year ended September 30, 2019. In some instances, to maintain continuity, events beyond the fiscal year have been included. Girl Scouts of the USA was founded by Juliette Gordon Low on March 12, 1912, in Savannah, Georgia, and chartered by the United States Congress on March 15, 1950. Its central office is located at 420 Fifth Avenue, New York, NY 10018-2798.

Girl Scouts of the USA is a member of the World Association of Girl Guides and Girl Scouts.

© 2021 by Girl Scouts of the United States of America
All rights reserved.
Electronic edition published 2021.



CONTENTS

3 Letter from the National President and Interim CEO

5 Who we are/Mission

6 Leadership

7 2019 Highlights

7 National Gold Award Girl Scouts

8 New Program

9 Outdoor High Adventure Badges, The North Face

10 Cyber Challenge, Raytheon

10 Cybersecurity Badges, Palo Alto Networks

11 Space Science Badges, NASA/ SETI

11 Coding for Good, Dell

12 GSRI

12 *Decoding the Digital Girl: Supporting and Defining Girls' Digital Leadership*

13 *Today's Girls, Tomorrow's Entrepreneurs: Transforming Interest and Aptitude into Success*

14 Key Events

14 Girl Scouts Love State Parks Weekend

14 Civics Education: Preparing the Next Generation of Informed and Engaged Citizens

15 Donor Stewardship

15 Planned giving donor chart

16 Alum & Lifetime Membership

17 Financial Report

18 Membership overview

19 Honor Role of Donors

23 JGL Society

41 Contact Us



9



14



11



Message from the National President and the Interim Chief Executive Officer



Karen P. Layng
**GSUSA National
President**



Judith Batty
GSUSA Interim CEO

Dear Friends,

On behalf of the entire Girl Scout Movement, we express our profound thanks for your commitment to building the leaders of tomorrow who will be the creators, innovators, and change-makers our country needs. We know that since 2019 the world has changed dramatically. The COVID-19 pandemic has upended our daily lives in ways we never imagined, and the country is rightly accelerating its awareness of systemic racism. We also know that with our mission squarely at the center, we can create the tools we need to give our girls a new future and gain the skills they will need to thrive.

Girl Scouts exists to serve girls. Our research-backed, girl-centered leadership programming offers life-changing experiences that enable girls to discover new passions, build skills and expertise, and succeed on whatever paths they choose. With the ever-changing landscape of our society, from technology to demographics to the ways in which we socialize, collaborate, and engage in civic action, Girl Scouts is continuously expanding and refining our program to stay relevant and aligned with the ways today's girls live their lives.

Girl Scouts had a lot to celebrate in fiscal year 2019.

In July, we rolled out 42 new badges: Outdoor High-Adventure, Space Science, and Coding for Good, all for girls in grades K to 12, and Cybersecurity badges for older girls. (We launched our cybersecurity curriculum in 2018 with badges for younger girls.) These new badge experiences give girls the freedom to make their own choices about how they want to experience and influence the world.

Girl response to these new badges was inspiring. By the end of 2019, girls had earned more than one million STEM badges—a 29% increase over the previous year. They had also earned more than 700,000 outdoor badges, and through a partnership with the National Association of State Park Directors, thousands of Girl Scouts nationwide had a great outdoor experience participating in the Girl Scouts Love State Parks Weekend. These numbers underscore the fact that Girl Scouts is resonating with girls.

In addition to our impactful programming, Girl Scouts led in other ways in 2019. The Girl Scout Research Institute (GSRI) released new studies

demonstrating the power of the Girl Scout approach to girl leadership development. Decoding the Digital Girl demonstrated the key connection between the digital experiences of girls and their use of technology to lead in their own lives, and beyond.

The report found that Girl Scouts are more likely than boys, and non-Girl Scout girls, to be digital leaders. Girl Scouts stand out by their ability to solve problems and find reliable information online, discover new talents and interests through technology, and take action by using technology to innovate.

With the report Today's Girls, Tomorrow's Entrepreneurs, GSRI set out to understand how girls today think and feel about entrepreneurship and how they experience and engage in entrepreneurial activities. The findings indicated that many girls were already on an entrepreneurial path: More than three in four girls expressed interest in becoming an entrepreneur in the future.

You can read more about these findings, the Girl Scouts Love State Parks events, our exciting programming, and the many other ways Girl Scouts is building the next generation of girl leaders in the pages of this report.

With the enduring support of donors and partners like you, we are ensuring that Girl Scouts remains relevant to girls and their families, and that we are building the next generation of leaders for our communities, businesses, and institutions across the country. Throughout their Girl Scout experience, girls develop the courage, confidence, and character to take the lead and understand the power they have to make the world a better place. Thank you again for your belief in our mission.

Yours in Girl Scouting,



Karen P. Layng
National President



Judith Batty
Interim Chief Executive Officer



Girl Scout Mission Statement

We're 2.5 million strong—more than 1.7 million girls and 750,000 adults who believe in the power of every G.I.R.L. (Go-getter, Innovator, Risk-taker, Leader)™ to change the world. Our extraordinary journey began more than 100 years ago with the original G.I.R.L., Juliette Gordon “Daisy” Low. On March 12, 1912, in Savannah, Georgia, she organized the very first Girl Scout troop, and every year since, we've honored her vision and legacy, building girls of courage, confidence, and character who make the world a better place. We're the preeminent leadership development organization for girls. And with programs from coast to coast and across the globe, Girl Scouts offers every girl a chance to practice a lifetime of leadership, adventure, and success.

The Girl Scout Promise

On my honor, I will try:

To serve God and my country,
To help people at all times,
And to live by the Girl Scout Law.

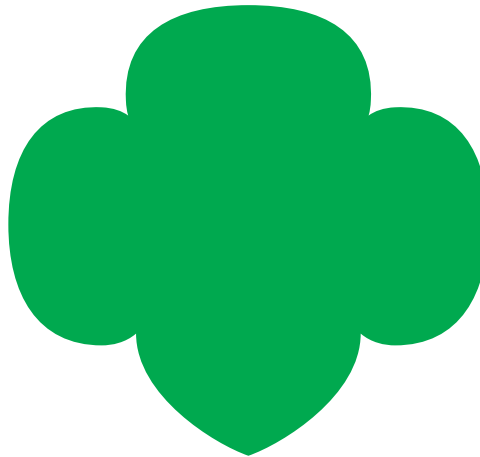
The Girl Scout Law

I will do my best to be

honest and fair,
friendly and helpful,
considerate and caring,
courageous and strong, and
responsible for what I say and do,

and to

respect myself and others,
respect authority,
use resources wisely,
make the world a better place, and
be a sister to every Girl Scout.



GSUSA Leadership (FY 2019)

Officers

Kathy Hopinkah Hannan*
National President
Southampton, New York

Sharon H. Matthews
1st Vice President
Charlotte, North Carolina

Jeanne Kwong Bickford
2nd Vice President
Darien, Connecticut

Charles D. (Chuck) McLane Jr.
Treasurer
Fort Meyers, Florida

Noorain Khan
Secretary
New York, New York

Member-at-Large

Jenny Alonzo
Sunnyside, New York

Mary Ann Altergott
St. Louis, Missouri

Mary Stengel Austen
Philadelphia, Pennsylvania

Judith N. Batty
Washington, District of Columbia

Cynthia Brinkley
St. Louis, Missouri

Anne H. Chow
Dallas, Texas

Wendy Drummond
Tulsa, Oklahoma

Charlie Garcia
Boca Raton, Florida

Vicki Gardner
Cincinnati, Ohio

Valarie A. Gelb
Middletown, Rhode Island

Steven F. Gilliland
Houston, Texas

Jeanmarie C. Grisi
Murray Hill, New Jersey

Heather Higginbottom
Washington, District of Columbia

Karen P. Layng*
Chicago, Illinois

Rose Littlejohn
New York, New York

Sue Major
San Diego, California

Cindy Miller
Lake Forest, Illinois

Mina T. Nguyen
Boston, Massachusetts

Debbie Nielson
Ogden, Utah

Norma Provencio Pichardo
Pasadena, California

Erika Rottenberg
San Francisco, California

Trooper Sanders
Washington, District of Columbia

Becky Schmitt
Bentonville, Arkansas

Suzanne Wade
San Antonio, Texas

Loria B. Yeadon
Mercer Island, Washington

National Board Development Committee

Members

Lorraine Hack
New York, New York

Robyn Ratcliffe Manzini
Las Vegas, Nevada

Margaret Serrano-Foster
Phoenix, Arizona

*Karen P. Layng was elected National President in October 2020.



2019 Highlights

2019 National Gold Award Girl Scouts

In October 2019, Girl Scouts of the USA (GSUSA) named ten extraordinary young change-makers as the 2019 National Gold Award Girl Scouts—the organization’s highest distinction.

These ten teen activists were honored for creating innovative and sustainable solutions for today’s most urgent local, national, and global challenges. Their projects covered a variety of topics, including racism in education, food deserts, representation of Indigenous people, access to music education, the mental health of cancer patients, ocean pollution, girls in STEM, legal rights for the deaf, LGBTQ+ representation, and higher education for foster care youth. These Girl Scouts found ambitious ways to lead the charge and transform the world.

Fueled by passion, persistence, and a resistance to acceptance of the status

quo, the National Gold Award Girl Scouts were selected from an impressive pool of this year’s Gold Award Girl Scouts nationwide for their extraordinary leadership and ability to develop lasting solutions—and achieve remarkable results—for critical issues in their communities and beyond. Girl Scouts who earn the Gold Award not only change the world for the better, they change it for good.

The 2019 National Gold Award Girl Scouts received a combined \$100,000 in college scholarships from Susan Bulkeley Butler, founder of a women’s leadership development organization and a former member of the Girl Scouts of the USA Board of Directors. The Kappa Delta Foundation and Arconic Foundation also each generously contributed \$50,000 in college scholarships for the 2019 cohort. Microsoft was the celebration’s premier sponsor, hosting the event at the flagship Microsoft Store in New York City.





2019 New Program

GSUSA launched 42 new badges and programming exclusively for girls in grades K to 12 in 2019. This wide range of program offerings allowed girls to make their own choices about how they want to experience and influence the world, from adventuring in the snow or mountains to learning how to use coding to solve problems they care about. Girl Scout programming has long promoted independent decision making, which helps girls develop agency, challenge themselves to move beyond their comfort zones, and build confidence in their leadership abilities.



Outdoor High-Adventure Badges and The North Face

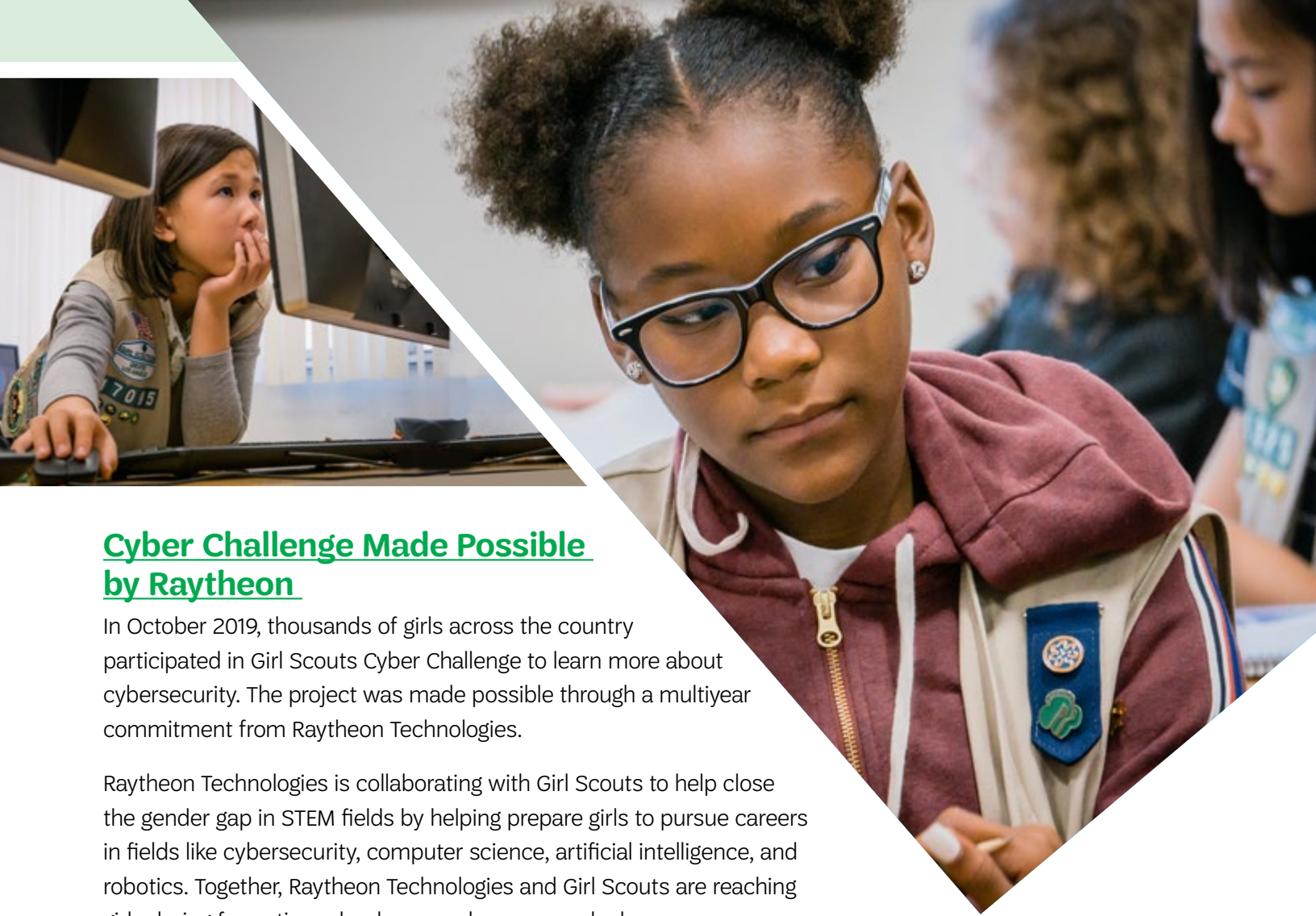
The [research](#) is clear: Outdoor experiences like the ones Girl Scouts offers most definitely foster leadership skills in girls. At Girl Scouts, girls get the chance to experience the great outdoors and all the wonder and adventure it entails.

Spending time in the outdoors is a cornerstone of the Girl Scout Leadership Experience and has been since Girl Scouts' inception. Our girl-centered environment and proven programming show girls the benefits of spending time in the world beyond walls in ways that encourage them to take healthy risks and overcome their fears.

Girls are forces of nature! They are resilient, curious, strong, and bold! That's why [Girl Scouts collaborated with The North Face](#) to develop 12 Outdoor High-Adventure badges for girls in grades K to 12 to explore nature and embrace exciting outdoor adventures. These experiences, like backpacking, snowshoeing, cross-country skiing, rock climbing, and tree climbing, give girls the confidence to support one another, take healthy risks, and spend dedicated time in nature.

Even better, girls can choose how to earn their badges—by completing either a Trail Adventure or Snow or Climbing Adventure. Thanks to this new programming, Girl Scouts have even more options for creating their own outdoor adventures and developing crucial leadership skills that will prepare them for a lifetime of exploration and success.





Cyber Challenge Made Possible by Raytheon

In October 2019, thousands of girls across the country participated in Girl Scouts Cyber Challenge to learn more about cybersecurity. The project was made possible through a multiyear commitment from Raytheon Technologies.

Raytheon Technologies is collaborating with Girl Scouts to help close the gender gap in STEM fields by helping prepare girls to pursue careers in fields like cybersecurity, computer science, artificial intelligence, and robotics. Together, Raytheon Technologies and Girl Scouts are reaching girls during formative school years, where research shows peer pressure can sometimes deter girls from pursuing their interest in STEM.

Cybersecurity Badges with Palo Alto Networks

Palo Alto Networks and Girl Scouts have partnered to educate hundreds of thousands of girls in grades K to 12 about cybersecurity through newly developed Cybersecurity badges. This national effort is a huge step toward eliminating traditional barriers to technology industry access, such as gender and geography. The programming has been designed for girls as young as five years old, helping ensure that even the youngest girls have a foundation primed for future life and career success.

Thanks to the multiyear partnership with Palo Alto Networks, the badges will deepen the existing commitment that Girl Scouts has made to science, technology, engineering, and math (STEM) by using the organization's unique, hands-on curriculum, which inspires girls to embrace and celebrate scientific discovery in their lives at all ages.





Space Science **Badges with NASA/SETI**

The SETI Institute is leading a five-year program called “Reaching for the Stars: NASA Science for Girl Scouts,” which NASA’s Science Mission Directorate is funding through 2020.

Together with five partners—Girl Scouts of the USA, Girl Scouts of Northern California, the Astronomical Society of the Pacific, the University of Arizona, and ARIES Scientific—the SETI Institute has been delivering space science experiences to Girl Scouts and volunteers across the country. Accomplishments in the fourth year (2019) of the partnership included:

- The release of new Girl Scout Cadette, Senior, and Ambassador Space Science badges via badge requirement booklets and the Volunteer Toolkit—Daisy, Brownie, and Junior Space Science badges were released in 2018;
- Immersive space science train-the-trainer events for girls and volunteers at the University of Arizona and NASA’s Goddard Space Flight Center; and
- Astronomy Adventure Destination for girls at the University of Oregon’s Pine Mountain Observatory

Coding for Good with Dell

Dell continues to collaborate with GSUSA, most recently by supporting the development of Coding for Good badges for Girl Scout Daisies, Brownies, and Juniors. Through our shared mission of preparing the next

generation of female leaders in technology, Dell and GSUSA are giving girls the tools and experiences they need to empower themselves for careers in STEM.

The Coding for Good badges teach girls the basics of coding and detail how every stage of the coding process offers girls opportunities to use their skills for good. Girls learn about algorithms through age-appropriate, creative activities, such as coding positive memes to spread a message about a cause they care about, designing a digital game to educate people about an issue, and developing an app to promote healthy habits. Every Coding for Good badge has a plugged and an unplugged version so that all girls can learn the foundations of coding, regardless of their access to technology.

Our partner for almost ten years, Dell has supported Girl Scouts’ most innovative programs, including Be the Video Game Developer and the Digital Cookie™ platform. Be the Video Game Developer gives girls hands-on experience creating video games—and Digital Cookie, part of the iconic Girl Scout Cookie Program, takes girls “beyond the booth” to provide them with web-based entrepreneurial know-how that helps them cultivate and expand their cookie businesses while equipping them with essential life skills.

Girl Scout Research Institute

The Girl Scout Research Institute (GSRI) delivers customer-centric, data-driven insights across the Girl Scout Movement and beyond. The GSRI team measures the impact of Girl Scout programming and leads national conversations about girls and their development via groundbreaking original studies. These findings are then used to inform program, public policy, and advocacy for Girl Scouting.

Decoding the Digital Girl: Supporting and Defining Girls' Digital Leadership

In February 2019, Girl Scouts of the USA released *Decoding the Digital Girl: Defining and Supporting Girls' Digital Leadership*. For the report, the GSRI surveyed close to 2,900 girls and boys ages 5–17 and their parents to learn more about girls' digital leadership, differences between girls' and boys' digital engagement, and the role of parents/caregivers in this domain.

In defining digital leadership, GSUSA takes into account not just what a person knows about technology, but what they do with that knowledge to create, innovate, and connect with others to further their own development and make the world a better place. Based on this model, the GSRI identified and applied to the research ten digital leadership criteria.

Industry experts point to a pressing need for tech jobs that call for skills such as social and emotional intelligence and creativity in order to bring a human hand to the management of big data. As seen in *Decoding the Digital Girl*, girls are demonstrating these skills and others that position them to become future tech leaders.

In terms of gender-based findings, *Decoding the Digital Girl* reports that girls match boys in digital leadership overall, with 52% of girls and 50% of boys qualifying as digital leaders. However, there are some specific differences that illustrate the value of girls' unique tech skills and behaviors:



- Girls use technology to create more than boys do, e.g., making videos and doing coding projects through apps and online programs (45% of girls versus 38% of boys).
- More girls than boys discover a new talent or interest through technology (68% of girls versus 59% of boys).
- Girls are more connected than boys to social issues/causes via technology (60% of girls versus 51% of boys).
- Girls are more likely than boys to engage in educational activities online, including playing games for learning purposes (55% of girls versus 41% of boys) and reading books/articles (40% of girls versus 28% of boys).
- Boys are more likely than girls to play games online for fun (81% of boys versus 72% of girls) and game for four or more hours after school (31% of boys versus 17% of girls).
- Boys are more confident than girls in their tech skills (84% of boys versus 77% of girls).
- Boys are more likely than girls to believe they are the digital/tech expert in their families (53% of boys versus 38% of girls).



Also, Girl Scouts were included in the study to help gauge how effectively GSUSA develops girl leaders in the digital space. The data shows that Girl Scouts are more likely to be digital leaders than non-Girl Scouts and boys (64% versus 43% of non-Girl Scouts and 50% of boys). Girl Scouts particularly stand out when it comes to connecting to social issues and causes online (72% versus 51% of non-Girl Scouts) and connecting others to social causes through technology (63% versus 37%).

Today's Girls, Tomorrow's Entrepreneurs: Transforming Interest and Aptitude into Success

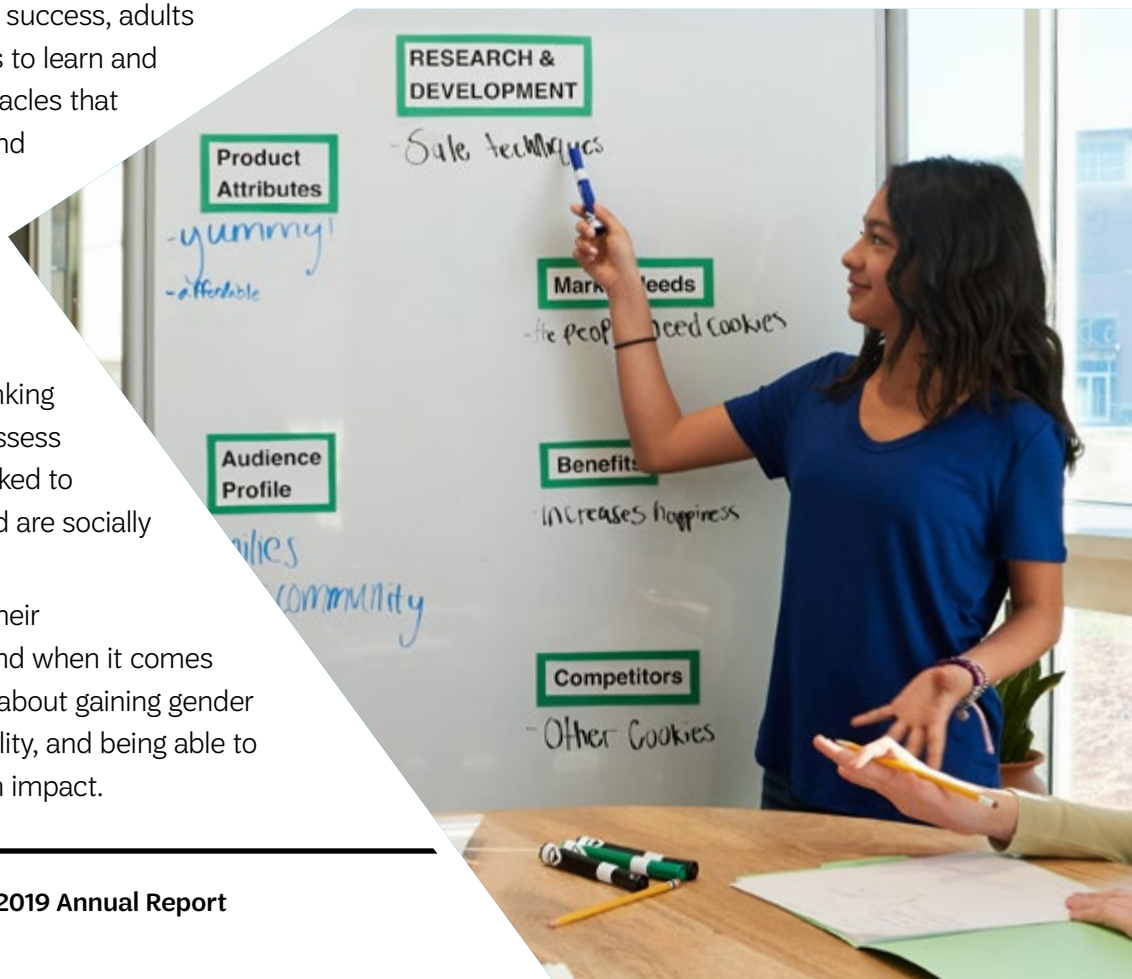
Released in 2019, *Today's Girls, Tomorrow's Entrepreneurs* examines how girls experience and aspire toward entrepreneurship in their current and future lives. Many girls are already interested in careers in entrepreneurship, are actively engaged in entrepreneurial activities, and possess an entrepreneurial mindset that gives them the tools to solve problems in their day-to-day experiences, in their communities, and in the world. To transform girls' interest and aptitude into success, adults need to give girls opportunities to learn and must work to remove the obstacles that girls identify: a fear of failure and perceptions that women in business face a steeper hill to climb than men.

The five key findings were:

1. Today's girls are already thinking like entrepreneurs. They possess many traits we know are linked to entrepreneurial success and are socially conscious problem-solvers.
2. Girls are already exploring their entrepreneurial interests. And when it comes to future careers, girls care about gaining gender parity, having financial stability, and being able to use their talents to make an impact.

3. Although girls express confidence in their ability to be entrepreneurs, they also identify key challenges to getting started, including a fear of risk and gender stereotypes.
4. Girls need additional support and encouragement in the entrepreneurial space. They're clear about what they want: more learning opportunities and real-life access to role models.
5. Black and Latina girls are especially interested in and particularly poised to become leaders in entrepreneurship; we need to support their interest and help them reach their goals.

By encouraging girls to enter the entrepreneurial space with the socially minded outlook so many already possess, we're not just preparing them for success in the marketplace but also giving them the tools to solve problems generally. We can transform what leadership looks like in the country by ensuring girls have the mindset and important business skills they need to succeed and by breaking down barriers to entry and success by removing the obstacles that girls themselves identify.



Key Events

Girl Scouts Love State Parks Weekend

On July 13–14, 2019, GSUSA held its first Girl Scouts Love State Parks weekend for girls to experience the great outdoors, an integral part of the organization’s girl-centered leadership program. Thousands of girls spent the weekend visiting hundreds of state parks across the United States to find adventure, explore nature, and learn what Girl Scouts is all about.

Nearly 400 state parks, across 48 states and Puerto Rico, welcomed approximately 30,000 Girl Scouts and their families from 104 councils to explore their natural resources; meet with rangers, staff, and volunteers; and celebrate their love of the outdoors. Girls camped under the stars, hiked miles of trails, performed service projects, and developed their skills in the arts, on water, and in the field.

The legacy of Girl Scouts and the outdoors is profound. Studies show that 71% of girl members ages 8 to 14 tried their first outdoor activity through the organization and half would not have had access to outdoor activities and programming if not for Girl Scouts. GSUSA’s cutting-edge



environmental conservation; camping; and outdoor science, technology, engineering, and math (STEM) programming is rooted in a passion for adventure and healthy risk-taking combined with taking action to protect the environment for present and future generations. Girl Scouts wants to get even more girls outside through Girl Scouts Love State Parks events.

Civics Education: Preparing the Next Generation of Informed and Engaged Citizens

Did you know that only one in three Americans can name all three branches of government? With this in mind, Girl Scouts hosted the Civics Education: Preparing the Next Generation of Informed and Engaged Citizens event and invited bipartisan leaders to discuss the importance of educating and engaging today’s youth in civics to preserve and strengthen our country’s democracy.

Chelsea Clinton, vice chair of the Clinton Foundation, moderated a discussion between panelists Laura Dove, secretary for the U.S Senate Republican majority; Lauren Hoaglund, Gold Award Girl Scout; Dr. Emma Humphries, chief education officer at iCivics; and Letitia James, attorney general for the State of New York.

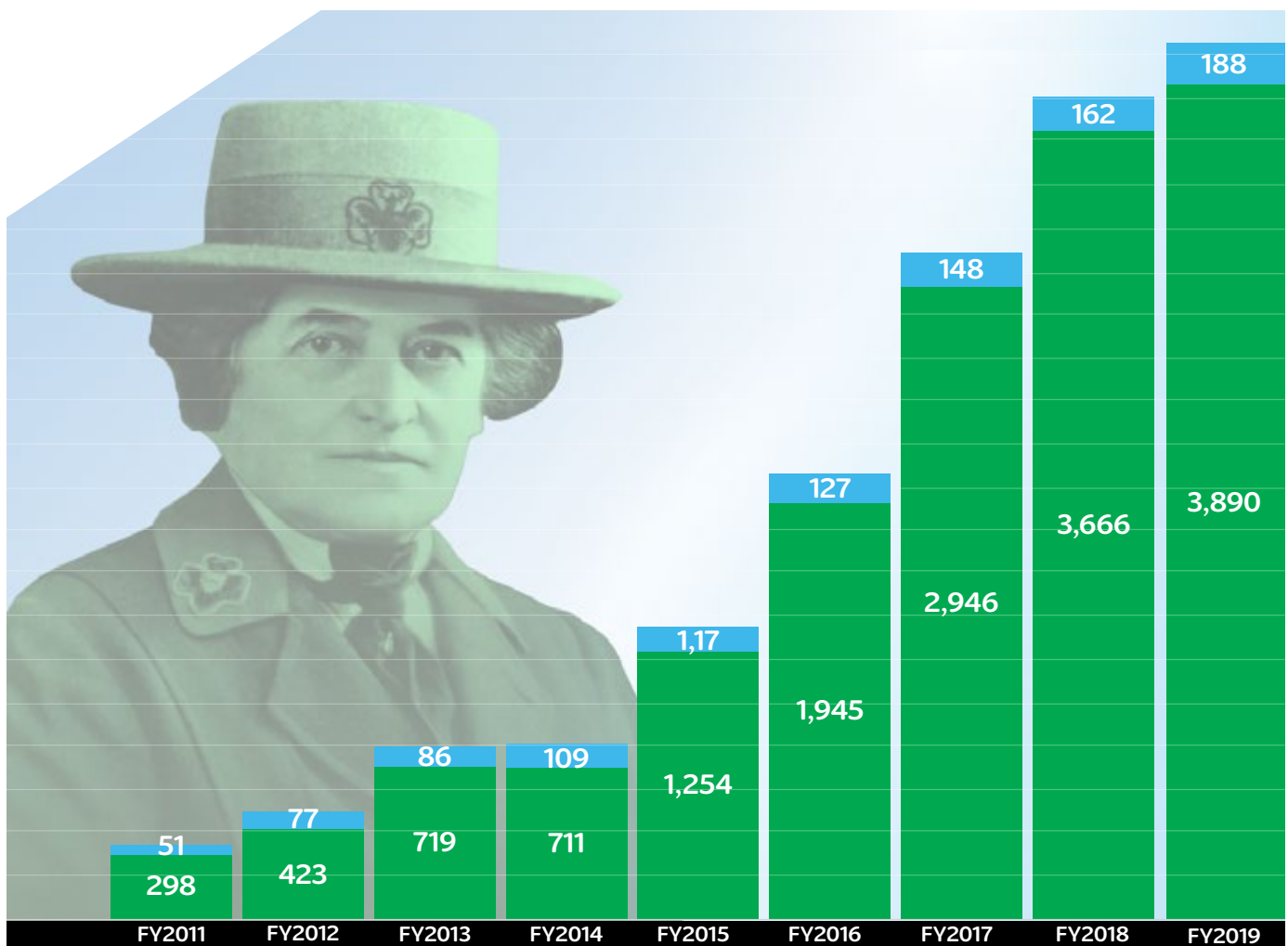
The panelists discussed why it’s so important to inspire youth to be informed and engaged in civic life—and gave examples from their own lives of how to equip others with the tools to take action and make positive change.

It was announced at this event that new Civics badges would be released in summer 2020 funded by Citi Foundation. Through these badges, girls will gain an in-depth understanding of how local, state, and federal government works, preparing them to be voters, activists, and, potentially, political leaders. Activities include researching laws and how they’re created, the voting process and the electoral college, the representation of women in government, and more. Girls also discover more about their local government officials and are encouraged to meet them.

Donor Stewardship

Planned Giving

The Juliette Gordon Low Society honors and recognizes those who, like Juliette, chose to include Girl Scouts as part of their legacies and as a beneficiary of their estates. These gifts can include naming a Girl Scout council or GSUSA as a beneficiary of a will, trust, retirement plan, life insurance policy, or donor-advised fund. The Juliette Gordon Low Society has grown more than tenfold since it was established in 2011. As of the end of fiscal year 2019, there were 4,078 members, representing an estimated \$183 million in Movement-wide planned giving. The Girl Scout Movement is grateful to Dianne Belk, founding chair of the Juliette Gordon Low Society, for her continued volunteer leadership in growing planned giving for Girl Scouts.





Alums and Lifetime Members

The Alum and Lifetime Membership initiative is welcoming back over 50 million Girl Scout alums to actively be part of the Girl Scout sisterhood. The Girl Scout Network is a powerful community of adults—Girl Scout alums and supporters from across the country—who believe in preparing girls to be the leaders of the future. From graduating high school seniors to senior citizens, the Girl Scout Network strives to offer meaningful engagement opportunities for this powerful community to support girls today. The initiative recognizes lifetime members for their dedication to supporting the Girl Scout mission and their strong belief in girls to make the world a better place.

Deepening Engagement with Our Alums Via the Girl Scout Network

In February 2019, we launched an engaging monthly digital newsletter filled with inspiring alum stories, savvy career advice, volunteer and advocacy opportunities, invitations to alum events, and more. Councils can access a list of subscribers in their zip codes and are encouraged to engage alums on a local level.

In June 2019, we inaugurated our Campfire Chat events at Girl Scout national headquarters, which bring together powerful Girl Scout alums and supporters at the top of their fields to educate and inspire people

who are striving for a better world. The events, which are also available for virtual viewing, showcase a wide variety of topics, from cooking inspiration to financial literacy and career advice (alums can sign up for the Girl Scout Network Newsletter at girlscouts.org/alum).

Increasing the Number of Lifetime Members and Their Impact on Our Movement

In January 2019, GSUSA released an elevated visual identity and new benefits for lifetime members, including a complimentary pin, an annual call with GSUSA's CEO, a 10% discount on Girl Scout merchandise purchased online, and the opportunity to purchase the new lifetime membership scarf.

As of January 24, 2019, \$25 of each new lifetime membership dues automatically funds one year of a Girl Scout membership for a girl from an underserved community in the lifetime member's council.

In April 2019, we offered a promotion to ten-plus-year Girl Scout volunteers and all Girl Scout staff members, inviting them to purchase a lifetime membership at a reduced \$200 rate. That promotion led to over 11,000 new lifetime members joining during the month of April.

Financial Report

Consolidated Statements of Financial Position As of September 30, 2019 and 2018:

	2019	2018
ASSETS		
Cash and cash equivalents	\$ 25,183,000	\$ 34,058,000
Accounts receivable, net of allowance for doubtful accounts of approximately \$395,0000 in 2019 and \$219,000 in 2018	5,053,000	5,930,000
Inventories, net	5,861,000	6,625,000
Prepaid expenses	1,649,000	1,670,000
Investments	176,400,000	172,678,000
Contributions and deferred gifts receivable, net	7,096,000	7,271,000
Funds held in trust for others	538,000	529,000
Property and equipment, net	49,617,000	43,958,000
Total assets	\$ 271,397,000	\$ 272,719,000
LIABILITIES AND NET ASSETS		
LIABILITIES		
Accounts payable and accrued liabilities	\$ 22,391,000	\$ 16,343,000
Pension liability	25,658,000	23,703,000
Funds held in trust for others	538,000	529,000
Deferred revenues:		
Membership dues	34,946,000	33,239,000
Other	146,000	76,000
Total liabilities	83,679,000	73,890,000
NET ASSETS		
Without donor restrictions:		
Operating fund	34,214,000	41,395,000
Pension fund	(35,990,000)	(30,159,000)
Board designated	121,857,000	121,667,000
	120,081,000	132,903,000
With donor restrictions		
Purpose restricted:		
Time-restricted for future periods	39,557,000	37,802,000
Perpetual in nature	369,000	416,000
	27,711,000	27,708,000
Total net assets	187,718,000	198,829,000
Total liabilities and net assets	\$271,397,000	\$272,719,000

Audited Financial Statements are available at girlscouts.org/AnnualReport.



Consolidated Statements of Activities

For the year ended September 30, 2019, with summarized comparative financial information for 2018

	Without Donor Restrictions	With Donor Restrictions	2019 Total	2018 Total
OPERATING REVENUES				
Membership dues	\$ 55,762,000	\$ -	\$ 55,762,000	\$ 57,871,000
Girl Scout merchandise gross profit	23,816,000	-	23,816,000	25,037,000
Royalty income	9,386,000	-	9,386,000	8,400,000
Gifts, grants and bequests	8,009,000	9,488,000	17,497,000	16,560,000
Training meeting revenue	5,156,000	-	5,156,000	7,075,000
Investment income allocation	5,379,000	1,782,000	7,161,000	6,528,000
Software maintenance	5,820,000	-	5,820,000	5,500,000
Other	500,000	769,000	1,269,000	1,441,000
Total operating revenues	113,828,000	12,039,000	125,867,000	128,412,000
Net assets released from restrictions	10,936,000	(10,936,000)	-	-
Total operating revenues	124,764,000	1,103,000	125,867,000	128,412,000
OPERATING EXPENSES				
Programing services:				
Comprehensive council support	39,209,000	-	39,209,000	44,948,000
Girl program development and adult learning opportunities	50,001,000	-	50,001,000	44,681,000
Brand promotion and external engagement	27,052,000	-	27,052,000	22,806,000
Total program expenses	116,262,000	-	116,262,000	112,435,000
Supporting services:				
Fundraising	5,089,000	-	5,089,000	3,737,000
Management and general	9,840,000	-	9,840,000	9,946,000
Total supporting services	14,929,000	-	14,929,000	13,683,000
Total operating expenses	13,191,000	-	13,191,000	126,118,000
Operating (deficit) supplies	(6,427,000)	1,103,000	(5,324,000)	2,294,000
NONOPERATING REVENUE, GAINS and LOSSES				
Endowment contributions	-	53,000	53,000	1,669,000
Change in value of deferred gifts	-	(16,000)	(16,000)	6,000
Change in value of charitable gift annuities	14,000	-	14,000	23,000
Contributed advertising revenue	186,401,000	-	186,401,000	26,611,000
Contributed advertising expense	(186,401,000)	-	(186,401,000)	(26,611,000)
Net investment income in excess of income allocation	750,000	571,000	1,321,000	5,389,000
Gain on sale of floors	-	-	-	2,839,000
Pension costs other than service cost	(5,831,000)	-	(5,831,000)	(1,373,000)
Other nonoperation pension charges	(1,328,000)	-	(1,328,000)	4,696,000
Total nonoperating revenue, gains and losses	(6,395,000)	608,000	(5,787,000)	13,249,000
Change in net assets	(12,822,000)	1,711,000	(11,111,000)	15,543,000
Net assets, beginning of year	132,903,000	65,926,000	198,829,000	183,286,000
Net assets, end of year	\$ 120,081,000	\$ 67,637,000	\$ 187,718,000	\$198,829,000

Honor Roll of Donors

Girl Scouts of the USA gratefully acknowledges the contributions of our donors and funders listed below for the fiscal year ending September 30, 2019.

\$1,000,000 and Above

Susan Bulkeley Butler
Estate of Louise Hoblitt
General Motors

\$500,000 and above

Dell Inc.
Johnson & Johnson
James Annenberg La Vea
Charitable Foundation
The David and Lura Lovell
Foundation
The Lyda Hill Foundation
NASA/SETI
Toyota Financial Services

\$100,000 and above

Anonymous
Arconic Foundation
Arnold W. and Alice R. Carlson
Charitable Fund
Estate of Dean William Carr, Jr.
Herford N. Elliott Trust
Infosys Foundation USA
LEGO Systems
Lord & Taylor
The North Face, Inc.
Ruth Maurine Walker Trust

\$50,000 and above

Estate of Riletta L. Cream
Fowler Family Fund II
Institute for Museums and
Library Services
JOANN Fabric and Craft Stores
Kappa Delta Foundation
Estate of Betty Lumpkin
The Matson Family Trust
Microsoft Corporation

\$25,000 and above

Ambrose Monell Foundation
Facebook
Susan Major

\$10,000 and above

Jeanne Kwong Bickford
CDW Corporation
Wendy Drummond
Edith Macy Trust Fund
Rebecca Fitton
Florescue Family Foundation
Valarie Gelb
Global Impact
Jeanmarie Grisi
Kathy Hopinkah Hannan
Andrea Kosta
Noorain Kahn
Rose Littlejohn
Robyn Ratcliffe Manzini
Sharon Matthews
Christine McClain
National Trust for Historic
Preservation
Debra Nielson
Erika Rottenberg
Estate of Nelda Simpson
Salesforce.com, Inc.
Suzanne Wade
Viacom International Inc.
World Foundation for Girl Guides
and Girl Scouts, Inc.

\$5,000 and above

Mary Ann Altergott
Mary Stengel Austen
Anonymous
Ford Foundation Matching Gift
Program
Anne Chow and Robert Moore
Dresner Advisory Services
Vicki Gardner
Barbara and David Groce
Jessie F. Hallett Charitable Trust
Heather Higginbottom
Kenneth Kirschner
The Betty Klepper Charitable
Fund
MasterCard
Charles F. Noyes
Estate of Thomas W. Pangborn
Patricia Redner
Rebeca Schmitt
Tierney
William H. Warner Memorial Trust
Loria Yeadon

\$1,000 and above

Sylvia Acevedo
Kristine Adams
Norman G. Aehle Charitable
Remainder Trust
Jennifer Allebach
Jenny Alonzo
Anonymous (3)
Branden Albert
The Balsamo Family Foundation
Bank of America Charitable Gift
Fund
Barbara M. Barrett
The Benevity Community Impact
Fund
Big Lots
Jane, Jeremy, and Megan Blocker
Meg Boucher
Bright Funds Foundation
Christine Butler
CA Technologies, Inc.
Estate of Emily Cates
Steven Clark
Kathy Cloninger
The Columbus Foundation
Concrete Supply Co, LLC
Margo Cook
Discover Fund Management
Tony Doye
RayMonda DuVall
Claire Ferrarin
Kathleen Fitzsimmons
Linda P. Foreman
Elaine Franco
The Ginger Companies
Catherine Copeland Gryczan
Harriet Hessam
Alice Hockenbury
Denise Holmquist
John Hom and Linda Jost-Hom
Hoover & Nebrig, Inc.
Barry Horowitz
Lonnie Humphries
IBM Employee Services Center
Jeanne Johnston
JPMorgan Chase Foundation
Matching Gift Program
Kathleen Kelleher
KLM Foundation
Lisa Kohn
Karen Layng
Debbie Linehan

Estate of Helen Mattin
Diane McCann
Liza McIntyre
Lynelle McKay
Robin Moore, M.D.
Jamie Muesing
Northrop Grumman Charitable
Matching Program
Angela R. Olden
Estate of John C. Pangborn
Penton Learning Systems—IQPC
Elizabeth Perez
Mary Louise and H. R. Petersen
Pledgeling Foundation
Renaissance Charitable
Foundation
Margaret Renwand
Valerie Russell
Sapreet Kaur Saluja
Trooper Sanders
Constance Shapiro
Melvin R. and Irene M. Sheffer
Trust
Janine Shelffo
Susan E. Swanson
TisBest Philanthropy
UBS Donor Advised Fund
Eric Warner
Dr. Corwith C. White and
Wendy Sue White
Jessica Williams
Susan and Timothy Williams
Judith Wise
YourCause



Honor Roll of Donors

The following donors are acknowledged for donations of \$25,000 or more in support of Girl Scouts for the fiscal year ending September 30, 2019.

Alaska

BP
ConocoPhillips Alaska
Rasmuson Foundation

Black Diamond

The Greater Kanawha Valley Foundation

Central Indiana

Michael Miller
Salesforce
The Indianapolis Foundation
United Way of Central Indiana
United Way of Greater Lafayette
United Way of Howard County
United Way of Johnson County

Central Texas

Brewhouse Productions
H-E-B
Intel Foundation
Office of the Governor of Texas Criminal Justice Division
Chester Posey
Samsung Austin Semiconductor
San Angelo Health Foundation
State of Texas, Office of the Governor
Stylecraft Builders, Inc
United Way of Concho Valley
Wells Fargo Bank of Austin

Citrus

Sherry and Sam McMaster
Marilyn and Floyd Whiddon

Colonial Coast

Arconic
Obici Healthcare
United Way Peninsula
United Way South Hampton Roads

Colorado

Helen M. McLoraine Girl Scouts Scholarship Endowment Fund at The Denver Foundation
Mile High United Way
Wells Fargo Foundation
Xcel Energy Foundation
Margaret Zoller

Dakota Horizons

MDU Foundation
NWND Girl Scout Endowment

Otto Bremer Trust
United Way Black Hills
Wells Fargo High Impact Grant

Desert Southwest—Southern New Mexico & West Texas

Devon Energy Production Corporation
The Henry Foundation
United Way of Midland
United Way of Odessa
Zia Girl Scouts Foundation

Diamonds of Arkansas, Oklahoma and Texas

Donald R. Dearing and Martha M. Dearing Trust
First National Bank of Fort Smith
Carl B. and Florence E. King Foundation
Jones and Son Fine Jewelry
Sunderland Foundation
United Way of Fort Smith Area
Bennie Westphal

Eastern Iowa and Western Illinois

Aegon Transamerica Foundation

Eastern Massachusetts

BNY Mellon
Citizens Bank
City of Waltham
Lorraine B. Horn
Liberty Mutual Insurance Group
Mabel Louise Riley Foundation
Sanofi Genzyme
Ruth Stein Estate
Tricia J. Tilford
Toyota Financial Services
United Way of Massachusetts Bay and Merrimack Valley
Rachel Wheeler

Eastern Oklahoma

Bartlesville Regional United Way
The Mervin Bovaird Foundation
The Carol and John Christie Charitable Remainder Trust
George Kaiser Family Foundation
Hardesty Family Foundation
Lyon Foundation
State of Oklahoma—Office of Juvenile Affairs
BF Stradley Charitable Remainder Trust
Tulsa Area United Way

John Steele Zink Foundation
The Anne and Henry Zarrow Foundation

Eastern Washington and Northern Idaho

Ed and Beatriz Schweitzer
Schweitzer Engineering Laboratory
Washington Trust Bank

Gateway

The Community Foundation for Northeast Florida—Women's Giving Alliance
The Lucy Gooding Charitable Foundation Trust

Greater Atlanta

Amerigroup
Assurant
Chantal and Tommy Bagwell
The Coca-Cola Company and Foundation
Fiserv
Georgia Power
Georgia-Pacific
Mohawk Industries, Inc.
Peach State Health Plan
PNC Financial Services Group
Publix Super Markets Charities, Inc.
Toyota Financial Services
United Way of Greater Atlanta
Waterfall Foundation, Inc.
WellCare Health Plans, Inc.

Greater Los Angeles

AT&T
Lynn Mack-Costello and Joseph Costello
Dreamworks
EY
FMR Enterprises, Inc.
The Fanny & Svante Knistrom Foundation
Kroger
Lakeview Foundation
Little Brownie Bakers
National Recreation Foundation
The North Face
Toyota Financial Services
URW
Vernon Community Fund

Greater South Texas

Robert and Helen Kleberg Foundation
Guadalupe and Lilia Martinez Foundation
United Way of the Coastal Bend
United Way of South Texas
Valley Baptist Legacy Foundation



Green and White Mountains

Fidelity Charitable
 Fidelity Investments
 Jack and Dorothy Byrne Foundation

Gulfcoast Florida

The Estate of Sue Garland

Heart of Central California

County of Sacramento
 Thomas P Raley Foundation
 SMUD

Heart of Pennsylvania

First Community Foundation Partnership
 Lawrence L. and Julia Z. Hoverter Charitable
 Foundation
 The Powder Mill Foundation
 PPL Corporation
 The Donald B. and Dorothy L. Stabler
 Foundation

Heart of the South

FedEx
 Estate of Alys Lipscomb
 United Way of the Mid-South

Historic Georgia

Community Foundation of Central GA
 Gulfstream
 Publix Supermarket Charities
 Turner Family Foundation
 United Way of Central Georgia
 United Way of Central Savannah River Area
 United Way of Coastal Georgia
 United Way of Southwest Georgia
 United Way of The Chattahoochee Valley

Hornets' Nest

Mariam and Robert Hayes Charitable Trust
 PWC

Kansas Heartland

Reba Cox
 Dee Rolph
 Dwayne and Velma Wallace Foundation

Kentuckiana

Gheens Foundation
 Walter Jacobs Charitable Trust
 Lift a Life Foundation, Inc.
 UPS Foundation

Louisiana East

United Way of St. Charles
 Huey and Angelina Wilson Foundation

Michigan Shore to Shore

Community Foundation of Muskegon County
 Community Foundation for Northeast
 Michigan

Missouri Heartland

United Way of Central Missouri
 United Way of the Ozarks

Montana and Wyoming

Beverly Hoy

Northeast Kansas and Northwest Missouri

Black & Veatch
 Burns & McDonnell
 Cowden Family Foundation
 Hall Family Foundation
 Lewis H. Humphrey's Charitable Trust
 United Way of Greater Kansas City

Northeast Texas

The Boone Family Foundation
 Capital One Bank
 Shelby Meadows Mental Health Policy
 Institute
 OneStar Foundation DBA AmeriCorps
 State Farm
 Texas Instruments, Inc.
 United Way of Metropolitan Dallas UWMD

Northern California

Applied Materials, Inc.
 Diana L. Bell
 City of San Jose
 Mary B. Cranston
 Handel Sunrise Foundation
 Kaiser Permanente—South Bay
 Dean and Margaret Lesher Foundation
 The Joseph and Vera Long Foundation
 Marina H. Park and Robert I. Sutton
 Mary Ellen Richey
 The Rite Aid Foundation
 SETI Institute
 Leo M. Shortino Family Foundation
 STEM Next Opportunity Fund Visa
 Foundation

Northern Illinois

Kane County Riverboat Grant Fund
 Scott and Kelly McCleary
 Delores Scott
 State Farm Insurance Company

Northwestern Great Lakes

Brown County United Way
 United Way Fox Cities
 United Way of Marathon County
 United Way of Portage County

Ohio's Heartland

AEP Foundation
 Battelle
 George H. Alber Fund
 LBrands Foundation

Orange County

The Disneyland Resort
 The Estate of Sharon L. Dziuk
 The O.L. Halsell Foundation

Oregon and Southwest Washington

Clark Foundation
 Firstenberg Foundation
 Maybelle Clark Macdonald Fund
 The Oregon Community Foundation
 Elaine and Vittz-James Ramsdell Fund
 James and Shirley Rippey Foundation

River Valleys

3M Foundation
 Andersen Corporate Foundation
 Department of Public Safety—Office of
 Justice Programs
 Greater Twin Cities United Way
 Hardenbergh Foundation
 The Hormel Foundation
 Mayo Clinic
 United Way of Mower County, Inc.
 United Way of Olmsted County
 Xcel Energy Foundation

San Diego

Barbara J. Dickey
 The Hervey Family Non-Endowment Fund at
 TSDF
 Susan and John Major
 Mission Federal Credit Union
 Nordson Corporation Foundation
 Northrop Grumman
 Price Philanthropies
 Qualcomm
 San Diego Gas & Electric
 Southwest Airlines
 Katie and Daniel Sullivan
 Catherine Veatch
 Wells Fargo

San Gorgonio

Applied Medical
 San Manuel Band of Mission Indians
 U.S. Bank Foundation

South Carolina-Mountains to Midlands

Jane and Dan Breeden
 Sarena Burch
 Colonial Life
 Contec, Inc.
 Susan P. Johnson
 Michelin North America
 Allison and Carl Muller
 Richland County Government
 Rosalind Richardson
 Judy Simpson

Southeast Florida

The Batchelor Foundation, Inc.



Children's Services Council of St. Lucie County
Publix Super Markets Charities, Inc.

Southeastern New England

Amica Companies Foundation
The Champlin Foundation
Aletta Morris McBean Charitable Trust
The Rhode Island Foundation

Southern Alabama

Wiregrass United Way

Southern Appalachians

Pilot Travel Centers LLC
United Way of Greater Chattanooga
United Way of Washington County TN

Southern Arizona

Arizona Complete Health
AZ Daily Star Sportsmen's Fund Inc.
City of Tucson
Bette Johnson
The Kemper & Ethel Marley Foundation
Margaret E. Mooney Foundation
Elizabeth Tolbert Qualified Marital Trust
Women's Foundation of Southern Arizona

Southwest Texas

The Capital Group Companies Charitable
Foundation
Sally and Charlie Cheever Foundation
City of San Antonio
County of Bexar
Faye L. and William L. Cowden Charitable
Foundation
CPS Energy
Dan and Gloria Oppenheimer Fund of the
San Antonio Area Foundation
Greehey Family Foundation
H-E-B
Bill and Margie Klesse
Kate Marmion Charitable Foundation
McCombs Foundation
NuStar Energy, L.P.
Harvey E. Najim Charitable Foundation
Shining Star ENERGY
South Texas Money Management, Ltd.
Texas A&M University—San Antonio
The Tobin Endowment
United Way of San Antonio and Bexar County
USAA
Valero Energy Foundation
Wells Fargo Bank, N.A.

Spirit of Nebraska

Robert Catron
Robert Daugherty Foundation
Joseph Horwath Foundation
Lozier Foundation
William and Ruth Scott Family Foundation
Sunderland Foundation

Texas Oklahoma Plains

M.K. Brown Foundation, Inc.
CH Foundation
M.S. Doss Foundation
Facebook Fort Worth Data Center
Ella C. McFadden Charitable Trust
Helen Jones Foundation, Inc.
Sid W. Richardson Foundation
Ryan Foundation
Wells Fargo

Tropical Florida

The United Way of Miami-Dade

Utah

Emma Eccles Foundation
Friends of Girl Scouts of Utah
Janet Q. Lawson Foundation
The Estate of Robert Scheer

Virginia Skyline

HelenRuth Burch

Western Ohio

Nancy Dawes and Dawes Direct LLC
The Dayton Foundation
Ethicon
Susan Gantz-Matz
Ellen Iobst
Anna Jones Monnett
Betsy LaMacchia
Luther Charitable Foundation
Victoria Nilles
Charlotte R. Schmidlapp Fund, Fifth Third
Bank, Trustee
Stranahan Foundation
United Way of Greater Cincinnati
United Way of Lima
United Way of Toledo
US Bank Foundation
Jody Wainscott

Western Washington

C. Keith Birkenfeld Memorial Trust
Darigold
Quoidbach Estate

Wisconsin Badgerland

Great Rivers United Way

Wisconsin Southeast

Associated Bank
Brewers Community Foundation, Inc.
Margaret A Cargill Foundation
GE Healthcare
Rockwell Automation Charitable Corporation
Carol Seeger
United Way of Greater Milwaukee and
Waukesha County



Juliette Gordon Low Society

The Juliette Gordon Low Society was established in 2012 to acknowledge at a national level those who choose to make Girl Scouts part of their legacy as a beneficiary of their estate. Girl Scouts of the USA gratefully acknowledges the following individuals who have made such a commitment to our Movement.

A double asterisk (**) denotes the Founding Chair of the Juliette Gordon Low Society.

GSUSA

Sanda Abramson	Patricia Diaz Dennis	Ellie Kazuk	Constance Polley
Sylvia Acevedo	Cynthia DiLeo	Pauline and Ken Kezer	Dr. Doris Ponitz
Barbara Alderson	Susan Dishart	Noorain Khan	Monta Potter and Cynthia Vernon
Mary Ann Altergott	Donna Dolce	Sally and Paul Kinsey	Lois and Peter Purgalis
Erik and Eva Andersen Girl Scout Movement-wide Challenge Planned Gift	Holli Gardner Drewry	Carole Krupa	Mary D. Putnam
Penny Anderson	Lois Drumm	Diana Kubick	Helen Hilton Raiser
Carri Baker	Wendy Drummond	Phillip Kuchler	Nancy H. Richardson
Becky Barnett	Carol M. Dunn	Peter and Laura Lane	Mary Roberts
Judith Batty	Stacy Dwyer-Neagles	Karen P. Layng	Peggy Fedeler Roit
Dianne Belk** and Lawrence Calder	Carol Eberly	Anita Lea	Valerie D. Romero
Dianne Belk** and Lawrence Calder Girl Scout Movement- wide Challenge Planned Gift	Jessica Edwards	Susanne and Jim Lenz	Joey Rosenberg
Dr. Elizabeth Bishop	Rosie Elder	Mary Levey	Sapreet Kaur Saluja
Eugenia B. Bishop	Carol Elfant	Rori Lindo-Britton	Trooper Sanders
Liza Boffen-Yordanov	Pam Ellis	Connie L. Lindsey	Cherie Sawinski
Barbara Bowling	Anne H. Eustis	Yvonne Lowrie	Sue G. Schreiber
Bonnie Boyce-Wilson	Suzanne Evanoff	Wonya Lucas	Maxine and Robert Schultz
Barbara Kelly Breeden	Marsha "Marty" and Jerry Evans	Jane Ludwig	Mary Anne Servian
Dr. Karen A. Bremberg	Shannon Evers	Theresa Lynch	Cathy R. Sheffield
Karen L. Brinkman	Joanna M. and James A. Fara	Mary Rose Main	Sandy Steiber-Goatz Short
Sarah and Scott Brison	Dr. Phyllis T. Finger	Susan Major	Barbara Pickard Sirvis
Ellen I. Brooks	Marcia Forsythe	Connie Matsui and William Beckman	Zeta Smith
HelenRuth Burch	Rhonda B. Frascotti	Sharon Matthews	Karen J. Stay
Evelyn Burger	Linda L. Freiberger	Chris McClain	Caroline Steele
Sue Burton	Cynthia Gallardo	Katherine McCollom	Rita E. Sundberg
Susan B. Butler	Vicki Gardner	Tim and Katherine McGookey	Susan E. Swanson
Sally Butters	Michèle A. Gariépy	Valerie McKinney	Julie Sygiel
Gloria Janiak Cecil	Janet Garretson	Barbara Melgaard-Grissen	Katherine Tamer
Roberta Cipriano	Mr. Dana J. Gelb	Claire Meyerhoff	Nadia R. Taylor
Kathy Cloninger and Mike Williams	Valarie Gelb	Mary Jean Miller	Sandy Taylor
Carol and John Cochran	Kathleen Genaitis	Patricia Moody	Davia Temin and Walter Kicinski
Nancy C. Cochran	Janann H. Giles	Christine Morgan and Sandra Trissell	Jack and Ashley Temsey
Schaunte Collins	Barbara E. Gilewicz	Marjorie H. Motch	Sandy Thomas
Kerry Connolly	Catherine M. Guenzel	Mary Lynn and Stephen Myers	Cynthia and Ronald Thompson
Lorna Olson Cooper	Grace Halvorson	Judy Nagel	Marisa Tabizon Thompson
Jody Callender Couch and Sam Maxwell	Kathy and Mark Hannan	Debra Nakatomi	Jill Tracey
Nancy Proctor Cruden	Mary Heafy and John F. Smith	Debbie Nielson	Jan Hopkins Trachtman and Richard Trachtman
Frances R. Daily	Phyllis and Carl Heller	Marcia Nordgren	Valerie Trudeau
Dr. MaryLee Davis	Marian L. Herz	Carol Norr	DeeDee Wacksman
Julie Dawson	Harriet and Tawab Hessam	Mina Nguyen	Eric Warner
Nina Platt de Burgh	Frances Hesselbein	Susan M. Olsen	Carol Weisman and Frank Robbins, M.D.
Donna Decker	Lucy Hitch	LaRae Orullian	Diane and Loren White
	Barbara Horgan	Roberta H. Ostar	Ginger Whitesell
	Donna Horn	Elena Pak	Phyllis A. Willerscheidt
	Ann Marie Horner	Ira L. Patron	Susan A. and Timothy P. Williams
	Elizabeth Ann Huck	Bette J. Peltola, Ph.D	Tracy Williams
	Pam Hyland	Mary Louise and H.R. Petersen	Brooke M. Wiseman
	Dawna Immele	Arthur and Beverly Platt	Helen Wronski
	Leah Jaffe		
	Myrlene Jones		



Mary Edna and Alan S. Wuertenberger
Loria Yeadon
Teresa Younger
Matthew Zheleznyak

Juliette Gordon Low Birthplace

Susan L. Anderson
Dianne Belk** and Lawrence Calder
John E. Cay III
Kathy Cloninger and Mike Williams
Nina Platt de Burgh
Linda P. Foreman
Elizabeth Garvey
Caren Griffin
Harriet and Tawab Hessam
Margaret Gordon Gillespie Iwanchuk
Grace Main
Monta Potter and Cynthia Vernon
Margaret Seiler
Barbara Pickard Sirvis
Deb Taft
Carol Watters
Susan A. and Timothy P. Williams

USAGSO

Erik and Eva Andersen Girl Scout Movement-wide Challenge Planned Gift
Dianne Belk** and Lawrence Calder Girl Scout Movement-wide Challenge Planned Gift
Liza Boffen-Yordanof
Kathleen Fitzsimmons
Laurie Menzel
Stephanie Ortiz
Cynthia Panzani
Rachel Roche Walton
Eric Warner

Alaska

Sandra J. Adams
Erik and Eva Andersen Girl Scout Movement-wide Challenge Planned Gift
Jane Angvik and Vic Fischer
Tammy and Charles Ashley
Dianne Belk** and Lawrence Calder Girl Scout Movement-wide Challenge Planned Gift
Dorothy Helm
Karen A. Jordan
The Hon. William "Bill" Sheffield
Lynda L. Zaugg

Arizona Cactus-Pine Council

Erik and Eva Andersen Girl Scout

Movement-wide Challenge Planned Gift
Addy Bareiss
Polly Thomas
Ginger Whitesell

Black Diamond

Patti Alexander
Lynn Anastas
Erik and Eva Andersen Girl Scout Movement-wide Challenge Planned Gift
Dianne Belk** and Lawrence Calder Girl Scout Movement-wide Challenge Planned Gift
Angela Brown
Susan Brown, Jr.
Susan Brown, Sr.
Beth Casey
Candice Elliott
Ashley Fizer
Suzanne Goralczyk
Amanda Gouldsberry
Jody Gouldsberry
Dawna Immele
Katelyn Mencer
David and Martha Rader
Lea Ridenhour
Sally Roberts
Kathryn Simmons
Barbara Smith
Dedriell Taylor
Susan Thompson
Christina Wood

California's Central Coast

Erik and Eva Andersen Girl Scout Movement-wide Challenge Planned Gift
Dianne Belk** and Lawrence Calder Girl Scout Movement-wide Challenge Planned Gift
Charles and Marybeth Bontadelli
Mark Boos
Nancy L. Bowker
Lucillia Bezerra Boyd
Jane Butler
Jim Cain
Pam Cain
Steve and Nellie Cardinali
Tanya Carelli
Helen and Peter Carr
Carol and Tad Church
Hayley Civian
Karen M. Darocy
Sue and Rod Dewar
Lisa and Patrick Dobbins
William and Ann Donaldson
Crystal Evans
Linda Evans
Marilyn Ferraro
Nancy Carr Gordon

Brian Gostlin
Pam Gostlin
Katherine Hambley
Dr. Robert Helfrich
Tammie Helmuth
Jeanne S. Holmquist
Deborah Ewan Howitt
Kalpana Iyer
Gina and Steve Jaeger
Shelley Klein
Todd and Linda Kodet
Janet and Leon Mayou
Danielle McCaffrey
Gerald and Mary McCullough
Art and Marilyn McLoughlin
Kathy Medley
Susan Meek
Gloria M. Meile, Ph.D.
Fidelia Moreno
Peter and Karey Muller
Martha Myszak
Mariann Novarina
Harini Pichumani
Ruth and John Pierce
Ted and Mary Randall
Marcy Reed and Robert Weibezahl
Suzanna and Don Roth
Jody Skenderian
Karen Skole
Barbara Stokely
Katherine Stoner
Mary Story and Sylvia Hammond
Florence Tonkin
Beatrice P. Ward
Michelle Welsh

Caribe

Nicole Cruz
Kenya Luciana

Carolina Peaks to Piedmont

Erik and Eva Andersen Girl Scout Movement-wide Challenge Planned Gift
Dianne Belk** and Lawrence Calder Girl Scout Movement-wide Challenge Planned Gift
Patsy Brison and Scott Camp
Myra Brown
Cave Family
Doris Chappel
Lane Cook
Simeon Cross
Mr. and Mrs. William Daniel, Jr.
Deb Dowling
Susan Goforth
Audrey Congdon Harris
Naomi Hollingsworth
Rhys Long
Bonnie Macumber
Freda Mayse

Susan Mazzella
Lisa L. Patty
Kimberly Richards
Carol Robinson
Jane Talbert

Central and Southern New Jersey

Erik and Eva Andersen Girl Scout Movement-wide Challenge Planned Gift
Denise Baserman
Dianne Belk** and Lawrence Calder Girl Scout Movement-wide Challenge Planned Gift
Vicky Lynn Beyerle
Carol Bruno
Alexis Carrasquillo
Barbara Casey
Arlene Cherwien
Mary E. Connell
Jane Crosby
Margaret Cunningham
Beth Davies
Jeanne Fox and Steve DeMicco
Dorothy K. Fauver
Leslie Fehrenbach
Gail Greenberg
Natasha Hemmings
Rachel Holland and Kevin Drennan
Rhonda and Tom Holland
Ann Marie Horner
Peter Klugman, PhD.
Lorraine Leise
Joyce Leonetti
Andrea Sue Mandel
Carolyn McCallum
Valerie McKinney
Sheryl Meyer
Hugh Regan, Jr.
Carolyn Rutsky
Margaret Smith
Janet Stevens
Eleanor Stevenson
Opal Stockwell
Donna Tully
E. Jane Valas
Laurel VanLeer

Central and Western Massachusetts

Dianne Belk** and Lawrence Calder Girl Scout Movement-wide Challenge Planned Gift
Polly Billiel
Sue Brackett
Helen Garcia
Alice Hahn
Patti Hallberg
Patricia Hammond
Catherine McCarty



Sayed Mirzad
Ann Marie Waller
Rouda West
Sherril Willis

Central California South

Erik and Eva Andersen Girl Scout
Movement-wide Challenge
Planned Gift

Camille Anderson
Adrianna Atchinson
Roy Atchinson
Susan Bartlett
Guadalupe P. Barton
Sarah Barton
Dianne Belk** and Lawrence
Calder Girl Scout Movement-
wide Challenge Planned Gift

Komal Desai
LaDonna Elkins
Dr. Cathy Ferguson
Roselind Gaviola
Jennie Guadagno
Michelle Loyd
Melanie Mckimmons
Nicole D. Phillips
Dr. Russell Statham
Julie Caldwell Ulrich

Central Illinois

Erik and Eva Andersen Girl Scout
Movement-wide Challenge
Planned Gift

Dianne Belk** and Lawrence
Calder Girl Scout Movement-
wide Challenge Planned Gift

Sandy Bellati
Janet Furr
Bev Herzog
Carla Houser
Cam Lahart
Ann and Kent Lynch
Deb Wozniak

Central Indiana

Dr. Mary K. Ade
Mr. and Mrs. Bill Allen
Erik and Eva Andersen Girl Scout
Movement-wide Challenge
Planned Gift

Joan Anderson
Elmira Annis
Kathleen Atwell
Peggy Bachman
Dianne Belk** and Lawrence
Calder Girl Scout Movement-
wide Challenge Planned Gift

Sandra Borders
Kimerly Klee Bird
George E. Boord
Sandra S. Borders
Carl Bender and Judge Barbara

Brugnaux
Mr. and Mrs. Ervin Buse
Rebecca L. Carl
Miriam Epple
William Fry
Alfreida Garner
Kathryn Huehl
Geraldine Johnson
Nancy Kaderabek
Beti Lurie
Deborah L. McCloud
Mr. and Mrs. Karl McClure, Jr.
Georgia Miller
Sally Morton
Carol A. Mutter
Andrea L. Myers
Mr. and Mrs. Keith Phelps
Christine Plews
Deana Potter and Dawn Wolf
Elizabeth Rehfus
M. Catherine Ritchie
Mr. and Mrs. Tom Schuman
Dr. and Mrs. Gene Sease
Deborah Hearn Smith
Stephanie Smithy
Melissa Stout-Conrad
Diana Sullivan
Mary Alice Vondrek
Midge J. Wolfla
Noraleen Young

Central Maryland

Erik and Eva Andersen Girl Scout
Movement-wide Challenge
Planned Gift

Violet Apple
Dianne Belk** and Lawrence
Calder Girl Scout Movement-
wide Challenge Planned Gift

Liza Boffen-Yordanov
Kathy Carpenter
Lynne M. Durbin
Alan L. and Mary Greenblatt
Endowment
Cassandra Kane
Patricia Salazar
Karen Singer

Central Texas

Erik and Eva Andersen Girl Scout
Movement-wide Challenge
Planned Gift

Dianne Belk** and Lawrence
Calder Girl Scout Movement-
wide Challenge Planned Gift

Suzanne Copeland
Trish Coy
Mary Crumley
Patricia Coy Ferguson
Bill Keienburg
Lynelle McKay
Linda Pelton

Charmaine Smith-Winters
Patricia Vinson

Chesapeake Bay

Erik and Eva Andersen Girl Scout
Movement-wide Challenge
Planned Gift

Dianne Belk** and Lawrence
Calder Girl Scout Movement-
wide Challenge Planned Gift

Audrey C. Boys
Gloria Zook Diodato
Barbara Dodge
Donald Flessner
Larry Gehrke

Mary E. George
Karen Gordy
Gail A. Graham
Deborah Grubbe
Daniel Hernandez
Anne T. Hogan

Dr. Bentley A. Hollander
Mary Elizabeth Hughes
Donna Ignatavicius
Caron Jackson

Janice Jessup
Maxine M. L'Abbee
Willy Lin
Harriet MacVeigh

Michael and Janet Maher
Regina Mullen
Katya A. Nieberg-Wheeler

Joan Przywara
Susan K. Purnell
Deborah Reinholz
Lynne S. Shand
Diane M. Sparks
Judith Taggart
Ann G. Thomas
Trudie E. Thompson

Citrus

Erik and Eva Andersen Girl Scout
Movement-wide Challenge
Planned Gift

Maryann Barry
Dianne Belk** and Lawrence
Calder Girl Scout Movement-
wide Challenge Planned Gift

Joan Borders
Carol Braby
Victoria Briesacher
Mary Susan Brown
Toni Castillo
Rose Colson
Barbara Crymes
Barbara Dangleman
James and Mary Harper
Cheryl Hite
Irene Hoepfner
Diana Huntress
Lauren Bonafide Joseph

Joanna Hope Koenig
Patty Kosiewski
Martha Lacy
Jessica Parker Malchow
Kathy McDonald
Karen McManus
Sherry McMaster
Deborah Orr
Lydia Sealey
Catherine Shelton
Martha Spruitenbug
Dorothy Steves Charitable Trust
Georgia Lorraine Stewart
Marilyn Whiddon
Penny Williamson

Colonial Coast

Deb Amatulli
Erik and Eva Andersen Girl Scout
Movement-wide Challenge
Planned Gift

Dianne Belk** and Lawrence
Calder Girl Scout Movement-
wide Challenge Planned Gift

Melissa Burroughs
Amy Coyne
Lila Davis
Kate Godby
Carolyn Goodwyn-Harris

Tricia Hudson
Helen Kattwinkel
Dan Keller
Tracy Keller

Betsy Kessler
Lorraine Lees
Anna Lee Liverman
Eileen Livick

Dale McClure
Cheryl McGrenra
Ashley McLeod
Susan Meek
Michael Mendelsohn

Jennifer Moose
Stacy Nixon
Camile Peter
William Rodner
Keith Snyder

Tesi Strickland
Toni Taylor
Mary Ann Thomas
Barbara Tierney

Deborah Verhofstadt
Dr. Nancy Welch
Claire Winiarek
Beth Yates

Colorado

Susan B. Alvillar
Kathryn M. Ambrose
Erik and Eva Andersen Girl Scout
Movement-wide Challenge
Planned Gift



Dianne Belk** and Lawrence
Calder Girl Scout Movement-
wide Challenge Planned Gift
Patricia Boyd
Sue “Dodgie” Dodge
Rae Ann Dougherty and Richard
Dougherty
Stephanie Foote
Nancy Henning
Margaret Gordon Gillespie
Iwanchuk
Brennan Linnecke
Cindy Miller
Karen Padrick
Carol E. Rhan
Pam Watson-Korbel
Jo Karen Werner

Commonwealth of Virginia

Molly Fuller
Paula Irene Otto

Connecticut

Jennifer Ahern
Jeanne and Antonio Ambrosio
Erik and Eva Andersen Girl Scout
Movement-wide Challenge
Planned Gift
Jeannette J. Archer-Simons
Mary Barneby
Helaine Bertsch
Dianne Belk** and Lawrence
Calder Girl Scout Movement-
wide Challenge Planned Gift
Sharon Bellinger
Patricia Bowen and Stanley Guzek
Linda Bresky
Alice Bruno
Deirdre H. DiCara
Michele and Tom Etzel
Doon Foster
Geraldine Frankel
Judy Frey
Kate Genaitis
Erica Evans Gioffre
Virginia and Joel Giuffré
Anne Godsey
Sherrilyn A. Granberg
Margaret Hansen-Kaplan
Anne I. Hayes
Pam Hyland
Peggy Jerrell
Barbara and William
Lawrence
Elaine Title Lowengard
Liz McGovern and Judy Eckert
Deborah Midford
Libby Richardson
Janet Ridenour and Kimberly
Johnson
Karen Sheehan
Sheryl Sleevea

Caroline F. Sloat
Mary Tesla
Carol E. and Lee F. West
Lea Gina White
Teresa C. Younger

Dakota Horizons

Erik and Eva Andersen Girl Scout
Movement-wide Challenge
Planned Gift
Tonya Andersen
Jennifer and Bryan Baloun
Dianne Belk** and Lawrence
Calder Girl Scout Movement-
wide Challenge Planned Gift
Kurt and Valerie Loudenback
Marla Meyer
Stephen and MaryLynn Meyers
Jeff and Tracy Munce
Lorna Olson-Cooper
Donnie Riedel
Marie Ruettggers
Susan and Bob Wefald

Desert Southwest

Mary Beringer
Diane Flanagan
Laurie Johnson
Judy Leibrook

Diamonds of Arkansas, Oklahoma, and Texas

Erik and Eva Andersen Girl Scout
Movement-wide Challenge
Planned Gift
Dianne Belk** and Lawrence
Calder Girl Scout Movement-
wide Challenge Planned Gift
Marjorie Bernhardt
Barbara Bethell
Andrea Chewing
Donald R. and Martha M. Dearing
Trust
Linda Marie Gieringer
Deborah Jones
Kate Lonberger
Sharon Lynch
Madeline Marquette
Cal, Jr. and Debbie Partee
Dawn Prasifka
Mary L. Sherman
Kimberly Snipes
Cristy Sowell

Eastern Iowa and Western Illinois

Erik and Eva Andersen Girl Scout
Movement-wide Challenge
Planned Gift
Holly and Jason Bark
Marty Beck
Dianne Belk** and Lawrence

Calder Girl Scout Movement-
wide Challenge Planned Gift
Hillary Blevins
Lacy Bock
MaryAnn Brown
Shelly Wells Cain
Mike and Teresa Colgan
Stacy Conforti
Mabel Cox
Susan Crouch
Theresa Dunkin
James and Eva Ann Elmer
Tina Ervin
Polly Falcon
Marjorie and Donald Grimm
Nicole Habben
Marybeth Jaggard
Jan Jensen
Judith L. Johnson
Amanda Kline
Brenda Lloyd
Donna Logan
Virginia Lyttle
Joyce Marinaccio
Ann Menke
Hadie Miller
Lee and Debra Mowers
Diane Nelson
Doug Nelson
Vicki Nelson
Cheryl Noller
Elisabeth and Sam Norwood
Anne Ryerson
Diane Sadler
Tracy Schwind
Mahlon Sibert
James W. and E. Bonnie Smith
Mindy Stark
William and Cinda Tanner
Marsha Thompson
Joyce Vance
Dave and Dee Vandeventer
Ruthanne Weighton
Rachel Wheeler

Eastern Massachusetts

Erik and Eva Andersen Girl Scout
Movement-wide Challenge
Planned Gift
Dianne Belk** and Lawrence
Calder Girl Scout Movement-
wide Challenge Planned Gift
Dorothy Lozowski Boisvert
Ruth N. Bramson
Mary M. Browne
Kelly Corwin
Lynn Saunders Cutter
Barbara H. Fortier and Karen L.
Edlund
Rachael Fusco
LeAnne Grillo
Michelle Harris

Carole Herman
Margaret Gordon Gillespie
Iwanchuk
Nancy Kiehnlé
Kathryn King
Sonia Kwon
Laura P. Lane
Diane Longtin
Cari Palmer Lord
Jane L. Lundquist and William
Lundquist
Mary-Ann Macaione
Anne M. Mastro-Valade
Diane McLoughlin
Marcia Metz
Regina M. Mullen
Edward Napekoski
Judith Nitsch
Roberta J. Noland
Roc O’Connell
Sandra Publicover
Elizabeth B. Roitman
Patricia C. Romeo-Gilbert
Linda A. Rossetti
Paula J. Ruozzi
Renee Sack
Carol Sapoznik
Celia L. Schulhoff
Linda Schuller
Crystal Sekerak
Gail R. Shapiro
Peggy H. Stevens
Deb Taft
Caitriona Taylor
Tricia Tilford
Amy vanNederpelt
Diane M. White
Zuania Wood

Eastern Missouri

Mary Ann Altergott and Jim
Beirne
Erik and Eva Andersen Girl Scout
Movement-wide Challenge
Planned Gift
Connie Argotsinger
Marcia Barber
Bonnie Barczykowski
Jenny and Chris Bartlow
Dianne Belk** and Lawrence
Calder Girl Scout Movement-
wide Challenge Planned Gift
Barbara Bowyer
Susan Carpenter
Kathy Dabrowski
Jessica and Jason Erfling
June McAllister Fowler
Larry and Nancy Gelb
Laurna C. Godwin
Karinn Granger
Cynthia Heath
Marsha Gail Meyer



Peggy Piotraschke
Laurie Z. Roberts

Eastern Oklahoma

Erik and Eva Andersen Girl Scout
Movement-wide Challenge
Planned Gift
Dianne Belk** and Lawrence
Calder Girl Scout Movement-
wide Challenge Planned Gift
Becky Collins
Pam and Paul Crawford
Monique Francois
Marcia and Ron MacLeod
Janie Sallinger
Jane Swinney
Larry Swinney

Eastern Pennsylvania

Mary Jane Adams
Colleen S. Alexander
Jennifer A. Alexander
Jennifer Allebach
Erik and Eva Andersen Girl Scout
Movement-wide Challenge
Planned Gift
Susan L. Anderson
B. Jean Anwyll
Stefanie Argus
Veronica I. Backenstoe
Diane Bartlett
Mr. and Mrs. Bradford Beadle
Kate Bech
Dianne Belk** and Lawrence
Calder Girl Scout Movement-
wide Challenge Planned Gift
Dianne Belk** and Lawrence
Calder Legacy Fund Challenge
in Honor of Diane and Robert
Roskamp
Phaedra D. Blocker
Frances Marie A. Bloom
Mr. and Mrs. George Bonadio
Judith H. Borie
Bernice K. Bricklin, Esq.
Ruth E. Brusstar
Dorothy Buchanan
Regina Bunis
Joyce K. Burkley
Sandra Y. Campbell-Jackson
Joyanne R. Christman
Peggyanne Coleman
Mary E. Connell
Mr. and Mrs. Raymond L. Croft
Kay M. Croll
Jayne E. Cumiskey
Donna Cutler
Patricia D. Dannert
Mr. and Mrs. David DeCampi
Leona Diamond
Ann Donley, C.P.A.
Julia Dougherty

Julia Dunmore
Patricia C. Dyer
Linda Engle
Katherine Kay Fabian
Phyllis Finger, MD
JoAnne Fischer and Eric E.
Hoffman
Sonia Foderaro
Karen A. Forbes
Mr. and Mrs. John Foreman
Mr. and Mrs. J. Peter Ford
Kim Fraithe-Dow
Roberta Healy Garbisch
Janet E. Garretson
Robert Garrett
Mr. and Mrs. Maurice Gaukler
Janie R. Hutchison Gill
Connie Girard-diCarlo
Ann D. Giunta
Kay E. Goetz
Pastor Virginia Anne Goodwin
Brenda Graves
Rosemarie B. Greco
Carole Chew Green
Marita Green
Catherine M. Guenzel
Joan M. Hagan
Debbie Hassan
Barbara D. Hauptfuhrer
Diana Heiman
Barbara Hifferty
Janet R. Hoffert
David and Pat Hoffman
Gloria A. Hoffner
Kevin Holleran
Frieda P. Hollihan
Betty M. Hollis
Anne T. Huber
Jorene Jameson
Sandra Payne Kenton
Gloria and Joe Kern
Ann O. Kerr
Kathy Killian
Sally A. Kinsey
Lydia P. Kirkland
Marsha H. Kitter
Mr. and Mrs. Trygve Kleppinger
Judith Kraines
Howard S. Kravitz
Ruth E. Kravitz
Gerlinde R. Lauff
Jeanne E. Lennon-Smith
Dolores Swirin Lepley
Katie Loeb-Schwab
Margaret MacCrimdell
Catherine Malkemes
Barbara Markowitz
Donna McBride
Beth Mcguinn
Martha Mewhort
Shelley Mincer
Alice C. Moat

Sandra Moyer
Lynn E. Musselman
Mr. and Mrs. F.W. Nikischer, Sr.
Patricia A. Owens
Merideth A. Perrone
Regina A. Pfeiffer
Shirley Preston
Susan M.S. Rapp
Susan D. Reitz
Suzanne E. Rocheleau
Mary Ann Rodda
Audrie Zettick Schaller
Mr. and Mrs. Barry Schmura
Ms. and Mr. Dolores Senchak
Eileen W. Sexton
Sharon A. Smith
Susan J. Smith
Mr. Davis and Ms. Karen E.
Sommers
Dorothy E. Speers
Jane M. Stellwagen
Elizabeth A. Stinson
Ruth Van Duyne Tait
Judith Volk
Deb Walters
Carol and Nick Watters
Mr. and Mrs. Stephen L. White
Norma Withsosky
Brenda Wolfe
Sue Ann Yocom
Alice Zaleski
Michele Zujkowski

Eastern South Carolina

Erik and Eva Andersen Girl Scout
Movement-wide Challenge
Planned Gift
Sharon Arnold
Dianne Belk** and Lawrence
Calder Girl Scout Movement-
wide Challenge Planned Gift
Nancy Borghesi
Martha Lee Brailsford
Belinda Copeland
Brenda Dolder
Cindy Floyd
Joyce Geils
Kelly Golden-Google
Sue Handy
Ruth Metzger
Mary Helen Condon Moore
Jane Pelletier
Lisa Safford
Patricia Shapiro Slay
Dr. Kendra Spencer

Eastern Washington and Northern Idaho

Nicole Amundson
Erik and Eva Andersen Girl Scout
Movement-wide Challenge
Planned Gift

Dianne Belk** and Lawrence
Calder Girl Scout Movement-
wide Challenge Planned Gift
Stacie and Shawn Davis
Judy Edlund
Curt Fackler
Judy Frigon
Kelly Fukai
Donna Greenough
Allen and Diane Horan
Carol Hunt
Dave and Margaret Jones
Sara Lindgren
Bob and Elaine Linscott
Don Mackin
Shannon Myers and Chris Davis
Brian Newberry
Mark Newbold
Susan Noble
Robyn Parks
Monica Preciado-Thulon
Brusan Rhoda-Wells
Ken and Victoria Roberge
Gerald and Carolyn Santantonio
John Sine
Charlie and Donna Stemple
Elizabeth Zinser

Farthest North

Erik and Eva Andersen Girl Scout
Movement-wide Challenge
Planned Gift
Dianne Belk** and Lawrence
Calder Girl Scout Movement-
wide Challenge Planned Gift
Gayle Garrigues
Karen Lundquist
Claudia Pierson
Margaret Soden

Florida Panhandle

Raslean M. Allen
Erik and Eva Andersen Girl Scout
Movement-wide Challenge
Planned Gift
Dianne Belk** and Lawrence
Calder Girl Scout Movement-
wide Challenge Planned Gift
Jane Floyd Bullen
Gretchen Erickson
Jane Floyd
Robin Harrell
Margaret McLane
Dr. Beverly Nash
Marty O'Neil

Gateway

Erik and Eva Andersen Girl Scout
Movement-wide Challenge
Planned Gift
Martha Barrett
Dianne Belk** and Lawrence



Calder Girl Scout Movement-wide Challenge Planned Gift
 Debbie Brainard
 Tricia Burley
 Ginger Butler
 Sue Butts
 Christine Clore
 Anne and Jack Connolly
 Marilyn and Cecil Gibson
 Roberta Giudice-Teller
 Byron Googins
 Karen Gordon
 Madeline Grader
 Alicia Grant
 Mary Lane Hartshorn
 David Hertz
 Mary Anne and Jeff Jacobs
 Patricia Knowles
 Janice and Bruce Lipsky
 Joanne Minshall
 Mary Ellen Olsen
 David and Martha Rader
 Susan and Ray Rodgers
 Laine and Gary Silverfield
 TriciaRae Stancato
 C. Nichole Terry
 Sandra and Harold Tysver
 Christine Dickinson Waldenmaier
 Linda Walker
 Carolyn Munro Wilson

Greater Atlanta

Dianne Belk** and Lawrence Calder
 Dianne Belk** and Lawrence Calder Girl Scout Movement-wide Challenge Planned Gift
 Anne Bowen-Long and Matthew Long
 Anthia Carter
 Moanica Caston
 Mr. and Mrs. Jack Cay IV
 Commander Frank S. Coleman
 Brad Disque
 Laura Disque
 Amy S. Dosik
 Sonnet Edmonds
 Joie S. Hain
 Phyllis H. Heller
 Harriet Paulk Hessam
 C. Ann Hooper
 Wanda Jackson
 Catherine Jellerts
 Althea Jackie Jenkins
 Kristen M. Lewis
 Sheila Mills
 Chris Murphy
 Mary M. Plant
 Joey Rosenberg
 Michelle P. Schweber
 Susan M. Thigpen
 Karen Thomas

Amy and Robert Vassey
 Ashley Kay Wyatt

Greater Chicago and Northwest Indiana

Erik and Eva Andersen Girl Scout Movement-wide Challenge Planned Gift
 Bonnie Batchelor
 Dianne Belk** and Lawrence Calder Girl Scout Movement-wide Challenge Planned Gift
 Alice Robison Berntson
 Tom J. Berntson
 Coralee Blazek
 Joanna Bossi
 Kathy Brooks
 Patricia Broughton
 Sally Clair
 Rosemarie D. Courtney
 Barbara J. Geist
 Kathy Clarke Girolamo
 Nancy J. Hackett
 Maureen S. Jamrock
 Christina Konieczka
 Patricia Ann Lasley
 Susanne M. Lenz
 Heather Linehan
 Carol Ann Macola
 Amanda Lynn Modelski
 Patricia Godfrey Moss and William W. Moss
 Kathleen Mane Oker
 Kelly Pavlik
 Jean and Bill Robinson
 Kimberlyn M. Schultz
 Peggy Tuck Sinko
 Mary Sue Terrance
 Mary Ann Tuft
 Brenda J. Washington
 Nancy L. Wright
 Susan A. Yates
 Melissa Young-Bridgeforth

Greater Iowa

Barb Adams
 Jennifer Allamy
 Erik and Eva Andersen Girl Scout Movement-wide Challenge Planned Gift
 Wanda Armstrong
 Dianne Belk** and Lawrence Calder Girl Scout Movement-wide Challenge Planned Gift
 Ricci Boldt
 Susan and Paul Davis
 Stacy Dwyer-Neagles
 Andrew and Kathy Eck
 Janet Elwer
 Nancy Franz
 Holly Grimes
 Ann Hanes

Joyce Hanes
 Jackie Johansen
 Martha West Krone
 Laura Lane
 Janet Lust
 Ashlee Parcel
 Mary Louise Petersen
 Beth Shelton
 Patrick Stanbro and Sandi Tucker-Stanbro
 Ione Wilkens

Greater Los Angeles

Corinne Abel
 LaNease Adams
 Natalie Farrar Adams and Stacy Adams
 Lissa Alfred
 Erik and Eva Andersen Girl Scout Movement-wide Challenge Planned Gift
 Lisa Axelrod
 Carolyn Baker
 David A. and Julie Battaglia
 Julie and Kenneth Beals
 Dianne Belk** and Lawrence Calder
 Dianne Belk** and Lawrence Calder Girl Scout Movement-wide Challenge Planned Gift
 Betty Berdiansky
 Steve Bolkovatz
 Gail I. Boyle
 Moira Brady
 Betsey L. and Don Brewer
 Michele Broadnax
 Chrystal Broesel
 Constance L. Burg
 Katy Carlson
 Jessica Cardenas
 Charles Carroll
 Elizabeth Chadwick
 Hailyn J. Chen
 Debbie Cook
 Patricia A. and Curtis Crider
 Phyllis E. Currie
 Christine A. Dean and Rosemary C. Veniegas
 Carol M. Dedrich
 Steven DePaul
 Katharine DeShaw and Mark McConnell
 Juanita Doplemore
 Barry and Peggy Edwards
 Theresa Edy-Kiene and Matthew Kiene
 Marie J. Fouts
 Diana Freeman
 Liisa and Michael Froggatt
 Megann Giardino
 Linda and Jay Griffey
 Diane K. Grohulski

Gloria and Bob Halfacre
 Erika L. Homan
 Bernie Horst
 Denise Hsu
 Shannon and Larry Johnston
 Sherry Lapidés
 Lise L. Luttgens
 Lynn Mack-Costello and Joseph Costello
 Marilyn and Dale Marshall
 Megan Martin and Brian Long
 Toni Martinez-Burgoyne and Rod Burgoyne
 Kelly and Jason Maxwell
 Gina McLeod
 Eleanor Moninger
 Ann Moore
 Frances and Richard Moreno
 Kathryn E. Nielsen
 Denise and Ken Nowack
 Adrienne Pacheco
 Marie Hamer Parco
 Melissa and Martino Pepe
 Sharis Rae Peters
 Aileen O. Poehls
 Ruth Post
 Janice Rector
 Elisabeth Rendeiro
 Leanne J. Rodgers
 Sylvia and Paul Rosenberger
 Margaret Rosenthal
 Shamira Sadler
 Danielle Sager-Ebling
 Ron Schrantz
 Yvonne and Robert Schueller
 Steve Shelton
 Chara Swodeck
 Cortney Szlemp
 Francesca Taylor
 Cindy and Ben Tenn
 Shelley B. Thompson
 Marie-Louise and Kenneth VanHorne
 Harry S. Webb
 Janet Whaley and Steven Preston
 Brenda J. Zamzow
 Margaret B. Zarate

Greater Mississippi

Erik and Eva Andersen Girl Scout Movement-wide Challenge Planned Gift
 Bob and Susan Athow
 Dianne Belk** and Lawrence Calder
 Dianne Belk** and Lawrence Calder Girl Scout Movement-wide Challenge Planned Gift
 Carolyn Boteler
 Christy Bridges
 Pam Britt
 Hazel Buck



Sarah Edwards
Lynn Erin Tolar Fortenberry
Lissa Frank
Cindy Gallardo
Scherry Gilliland
Leah Ingram
Gloria Johnson
Jean Lee
Maureen and Gary Lofton
Susan Merrill
Amy Mufflar
Ada Robinson
Rita Shaw
Kathy Storm
Becky Traweek
Mareanda Weems
Teresa Williams

Greater New York

Erik and Eva Andersen Girl Scout
Movement-wide Challenge
Planned Gift
Dianne Belk** and Lawrence
Calder Girl Scout Movement-
wide Challenge Planned Gift
Rhonda Boston
Joyce Brisbane
Florence Buckley
Charmaine Chung
Jennifer Chung
Lindsey Cosgrove
Melissa D'Andrea
Elizabeth Jane Dennis
Jane Dennis
Joyce Glencamp
Beatrice Jackson
Phyllis Joyner
Christina Llambelis
Rose and Robert Littlejohn
Kate W. Maitland
Marilyn Masiero
Meridith and Dan Maskara
Mary Jane Meconi
Toni Morrisette
Ann Newburger
Dawn Nolan
Carol Obler
Stacey Pilson
Karenbeatrice Porcher
Dorothy Sander
Jill and John Scibilia
Grace M. Scotto
Margaret Seiler
Topaz Spooner-Lay
Henrietta Swirin
Dolores Swirin-Yao
Sasha Thompson

Greater South Texas

Jennifer Allen
Sharon Almaguer
Erik and Eva Andersen Girl Scout

Movement-wide Challenge
Planned Gift
Dianne Belk** and Lawrence
Calder Girl Scout Movement-
wide Challenge Planned Gift
Elena Cano
Ruthie Ewers
Alejandra Llamas
Jamie F. Malone
Lea Peacock
Carol Rausch
Gloria Scott

Green and White Mountains

Erik and Eva Andersen Girl Scout
Movement-wide Challenge
Planned Gift
Stephen W. August
Susan Bates
Dianne Belk** and Lawrence
Calder Girl Scout Movement-
wide Challenge Planned Gift
Robin K. and Stephen Boyd
Sarah B. Brown
Mary Louise Brozena
Mary D. Burchard
Asha Carroll
Patricia A. and Paul Casey
Sarah Chaffee
Jennifer and Bob Clarke
Cynthia Cohen
Jacie A. Crump
Deborah A. Drake
Sherry and Louis Edmonds
Cheryl S. and Ward Heneveld
Mary Ellen and Scott Hettinger
Vera A. Kirk
Amanda and Craig LaClair
Amy Snow Lothrop
Pamela M. and Charles Lyman
Pat Macpherson
Frank P. Manley
Martha R. Manley
Frank Manley
Patricia K. Mellor
Courtney Morin
Jesse Pacht
Tara Pacht
Karen M. and Bruce Pehrson
Virginia Peterson
Peggy and John Piette
Carolyn M. Pine
Danielle Pray
Stephanie Romero
Deborah Rossi
Frances M. Rousseau
Carl Thompson

Gulfoast Florida

LaTasha Armstead
Renee Armstrong
Erik and Eva Andersen Girl Scout

Movement-wide Challenge
Planned Gift
Marilyn L. Arnall
Dianne Belk** and Lawrence
Calder
Dianne Belk** and Lawrence
Calder Girl Scout Movement-
wide Challenge Planned Gift
Ann Carrasquillo
Richard Cyphers
Rae Dowling
Linda Getzen
Marie Graziosi
Carol B. and Jules Green
Ashley Harris
Marilyn Harwell
Cecelia Hill
Karen Huebner
Christine Jennings
Barbara Lewis
Tracy P. Lux
Jessica Macera
Colleen McGue
Juliana C. Meek
Patricia Ramthum
Joseph P. and Janet Rhein Living
Trust
Roberta Rodgers
Shakira Rolle
Tracy Seider
Mary Anne Servian
Sandi F. Stewart
Sharon R. Stewart
Susan R. Stewart
Brenda Tate
Christine B. Yekel

Hawaii

Erik and Eva Andersen Girl Scout
Movement-wide Challenge
Planned Gift
Joanne Arizumi
Dianne Belk** and Lawrence
Calder Girl Scout Movement-
wide Challenge Planned Gift
Emmaly Calibraro
Shari Chang
Caroline Bond Davis
Margaret Hirakawa
Greg Hiyakumoto
Beth Whitehead

Heart of Central California

Erik and Eva Andersen Girl Scout
Movement-wide Challenge
Planned Gift
Gail Bakker
Dianne Belk** and Lawrence
Calder Girl Scout Movement-
wide Challenge Planned Gift
Sally Butters
Anna Davis

Maureen and Edmund Dickson
Ruth Donato
Patricia Estopinal
Dr. Linda E. Farley
Robert and Connie Ferriman
Elfrena Foord
Juanita Garcia and Michael
Barber
Rebecca Gardner
Edna Lucille Goforth
Virginia De Gregory
Robin Kren and Mark Hoag
Rose Hoeper
Beverly Lamb
Nancy Lawrence and Gordon
Klein
Valerie and Steven Lease
Alana Mathews
Winnie Maynard
Dr. Jenni and Terry Murphy
J. Edward and Leslie S. Parker
Pamela Saltenberger
Doris Scanlon
Beth Leonard Schatz and Ed
Schatz
Elena Schwed
Donna and Bob Snyder
Ann and David Wallace
Renee and Dale Waters
Debra Werolin
Charlotte Williams

Heart of Michigan

Elizabeth S. Bishop
Marjorie McRoberts

Heart of New Jersey

Erik and Eva Andersen Girl Scout
Movement-wide Challenge
Planned Gift
Dianna Beck-Clemens
Dianne Belk** and Lawrence
Calder Girl Scout Movement-
wide Challenge Planned Gift
Nancy Faulks
Yasche Glass
Okello Hemmings
Deborah Stahl
Kelly Trageser
Lydia Whitefield
Debra L. and Carl W. Zvanut

Heart of Pennsylvania

Erik and Eva Andersen Girl Scout
Movement-wide Challenge
Planned Gift
Josephine D. Appell
Joanne M. Bankos
Carol Bartoe
Vivian Beaston
Susan J. Beittel
Dianne Belk** and Lawrence



Calder Girl Scout Movement-wide Challenge Planned Gift
 Karen Diener Best
 Sharon Blosser
 Beth A. Bodtorf
 Louise Brown
 Martha Lynn “Marty” Brown
 Nancy W. Bryant
 Linda Castagna
 Shirley Covert
 Kate Crowley
 Linda L. Davis
 Judith Doviak
 Carol J. Eberly
 Carol V. Freer
 Kristine Frey
 Constance Gehman
 Jane L. Grim
 Sara L. Hannigan
 William Hoffman
 Charmine Hoke
 Hugh E. (Ed) Hughes
 Carolyn Hunger
 Kyle Kauffman
 Marilyn Derr Kauffman
 Betsy Keefer
 Carrol B. Kindel
 Patricia Kotchek
 Marguerite W. Leahy
 Gwen L. Loose
 Barbara Mable
 David Maneval
 Marilyn Mazza
 Kathryn McCorkle
 Janie McKnight
 Martha E. Meadows
 Sue Morrison
 Joan J. Mummert
 Doris Myers
 Marianne S. Nolt
 Terry Cohee Novak
 Karen Poe
 Candy Poklembo
 Flora H. Poulos
 Donna Pullo
 Jane B. Ransom
 Susan Ross
 Chriss Schultz
 Joan Scott
 Susan E. Shetter
 Anne Marie Shuey
 Pam Silar
 Sue Snell
 Belinda Steff and James Steff
 Mary Noel “Gus” Steinberg
 Linda Thum
 Milicent L. Treat
 Beth Tyson
 Rosalyn R. Ward
 Carolyn Warman
 Laura Weber
 Diana Weaver

Cornelia Yoder
 Martha H. Zeller

Heart of the Hudson
 Patricia Allen
 Erik Andersen
 Eva Andersen
 Erik and Eva Andersen Girl Scout Movement-wide Challenge Planned Gift
 Dianne Belk** and Lawrence Calder Girl Scout Movement-wide Challenge Planned Gift
 Deb Bogdanski
 Patricia Byrnes
 Richard and Fay Casatuta
 Eva Castleton
 Catherine M. Corbin
 Josephine Moffett
 Sandra C. Morrissey
 Patricia Page
 Deborah Ottaviano Paul
 Hada Reed
 Patricia Marie Reger
 Victoria Reilly Lehning, Esq.
 Jill Tanney
 Susan Greenberg Thrope
 Carol and Richard Vergara

Heart of the South
 Herbert Akers
 Erik and Eva Andersen Girl Scout Movement-wide Challenge Planned Gift
 Barbara Arnold
 Steve Arnold
 Dianne Belk** and Lawrence Calder
 Dianne Belk** and Lawrence Calder Girl Scout Movement-wide Challenge Planned Gift
 Venus Chaney
 John Richard Cochran
 Nancy Cochran
 Alison Coons
 Dolph Crafton
 Kimberly Crafton
 Rosemarie Fair
 Lori Gilmore
 Jenny Jones
 Pat Moody
 Lori Patton
 Melanie Schild
 Tom Schild
 Mary Kay Wegner
 Chris Wilson
 Debbie Zanot

Historic Georgia
 Erik and Eva Andersen Girl Scout Movement-wide Challenge Planned Gift

Isabella G. Arce
 Kristina Banks
 Dianne Belk** and Lawrence Calder
 Dianne Belk** and Lawrence Calder Girl Scout Movement-wide Challenge Planned Gift
 Myra Blackmon and Tom Holland
 Monai Boles
 Debbie Caballero
 Ron and Sue Chipman
 Elizabeth Connell
 Deborah Dees
 Sue Else
 Thomas M. Feldman
 McGuire Gordon and Carolyn Stefano
 Harriet Hessam
 Tawab Hessam
 Cheryl K. Legette
 Patricia Lyons
 Kim Melton
 Sherry Minnich
 Dick and Lee Moeller
 Fraley Turnipseed
 Sally Boyette Whatley

Hornet’s Nest
 Donna Dunlap

Jersey Shore
 Bahiyah Abdullah
 Mary Avalone
 Erik and Eva Andersen Girl Scout Movement-wide Challenge Planned Gift
 Muriel Beekman
 Dianne Belk** and Lawrence Calder Girl Scout Movement-wide Challenge Planned Gift
 Barbara Birdsall
 Paula Brown
 Helen Burrous
 Rachel Castellon
 Jennifer Cody
 Dolly Corona
 Maureen Crinigan
 Burton and Lynn Davis
 Maria Farhat-Tanzola
 Mildred Galanti
 Elizabeth Gallo
 Mary Anne Gearing
 Frances Golden
 Marie Graves
 Ginny Haines
 Thomas Halpin
 Susan Halsey
 Allison Havemann
 Cornelia Hedman
 John Holterhoff
 Carolyn Hordichuk
 Mildred Hughes

Mary Johnson
 Ida Keifer
 Patricia Kurz
 Roland and Dorothy Lewis
 Nancy Lewis
 Roland Lewis
 JoAnn McCann
 Susan McClure
 Doris McCluskey
 Marie McCool
 O’Meara Financial Group
 Martha O’Rourke DVM
 Megan Osborn
 John and Priscilla Oughton
 Mary Jane Paterson
 Carolyn Pine
 Richard Renzulli
 Charles Richter
 Linda Rieche
 Grace Robertson
 Barbara Romaine
 Ann Scott
 Roberta Sheridan
 Harry Truska
 Patricia Tuting
 L. Upton
 Eva Walther
 Harry Weisfeld
 Valera Worth

Kansas Heartland
 Erik and Eva Andersen Girl Scout Movement-wide Challenge Planned Gift
 Sharon Bastian
 Dianne Belk** and Lawrence Calder Girl Scout Movement-wide Challenge Planned Gift
 Dolores Crum
 Shelly Harris
 Theresa Hearn
 Arnold and Freda Hudspeth
 Faith Martin
 Shirley and Richard Mosher
 Lee E. Phillips III
 Sandy Remsberg
 Jo Karen Werner
 Elizabeth and Robert Workman

Kentuckiana
 Lisa Actor
 Erik and Eva Andersen Girl Scout Movement-wide Challenge Planned Gift
 Dianne Belk** and Lawrence Calder Girl Scout Movement-wide Challenge Planned Gift
 Vivian Blade
 Alfred C. and Gladys M. Carter Charitable Trust
 Ann Coffey



Ginny Edwards
 Frances Fach
 Suzy Gessner
 Sharon Handy
 T. Walter Hardy, Jr. Charitable
 Trust
 Ervin G. Houchens Charitable
 Trust
 Judy Hunter
 Walter Jacobs Charitable
 Trust
 Brian Jones
 Joe McCarroll Charitable Trust
 Nancy Northrop
 Susan Ragsdale
 Colleen Reeve
 Cindy Rosch
 Mary Sue Ryan
 Alton J. Schneider Foundation
 Joyce Seymour
 Pamela Silverman
 Cynthia Torp
 Lora Tucker
 Amy Welch
 Cynthia Weller
 Martha "Marty" Woelfel

Kentucky's Wilderness Road

Erik and Eva Andersen Girl Scout
 Movement-wide Challenge
 Planned Gift
 Jaclyn Badeau
 Carol Beirne
 Dianne Belk** and Lawrence
 Calder Girl Scout Movement-
 wide Challenge Planned Gift
 Mary Birenbaum
 Diane Curry
 Cindy Ferguson
 Ann Freytag
 Jodi Garrison
 Karen Greenwell
 Hannah Helm
 Charlotte Johnson
 Virginia Long
 Sandra McCain
 Eileen O'Brien
 Myra Raiche
 Kathleen Regan
 Jo Smith
 Julie Sygiel
 Sara Thurston
 Ruby Webster
 Natalie Wilson
 Katherine R. Woods

Louisiana East

Erik and Eva Andersen Girl Scout
 Movement-wide Challenge
 Planned Gift
 Dianne Belk** and Lawrence
 Calder Girl Scout Movement-

wide Challenge Planned Gift
 Miriam "Mimi" K. Delaune
 Juana Lombard
 Elizabeth Matherne
 Jill Pollard
 Gina McBride Sledge
 Elizabeth Stoner
 Mary Stringfellow
 Dr. Allison C. Augustus Wallace
 Jameeta Youngblood

Louisiana Pines to the Gulf

Barbara Wondrasch Coats
 Keven Webb

Maine

Erik and Eva Andersen Girl Scout
 Movement-wide Challenge
 Planned Gift
 Dianne Belk** and Lawrence
 Calder Girl Scout Movement-
 wide Challenge Planned Gift
 Janet Boone
 Susan Brackett
 Joanne Crepeau
 Kay Henry
 Janet O'Toole
 Caroline McAleese Riley
 Elizabeth Timm
 Donna Watson

Manitou

Erik and Eva Andersen Girl Scout
 Movement-wide Challenge
 Planned Gift
 Dianne Belk** and Lawrence
 Calder Girl Scout Movement-
 wide Challenge Planned Gift
 Marji Groth
 Marge Horneck
 Patricia Koppa
 Diane Krause-Stetson
 Romelle Nowak
 James D. and Patricia J. Reigle

Michigan Shore to Shore

Erik and Eva Andersen Girl Scout
 Movement-wide Challenge
 Planned Gift
 Mary K. Becker-Witt
 Dianne Belk** and Lawrence
 Calder Girl Scout Movement-
 wide Challenge Planned Gift
 Karen E. and James M. Feahr
 Neti D. Herndon Charitable
 Trust
 Sharon Hughes
 Deborah J. Hughes and Frederick
 J. Antcznk
 Alan R. Ryan Charitable Trust
 Mary A. and Wilhelm W. Seeger
 Bonnie Vance

Grace Wilcox Charitable Trust

Middle Tennessee

Kathy Cloninger and Mike
 Williams

**Minnesota and Wisconsin
Lakes and Pines**

Erik and Eva Andersen Girl Scout
 Movement-wide Challenge
 Planned Gift
 Tricia Andrews
 JoMarie Anton
 Ross and Elizabeth Anvary
 Sandra Barnhouse
 Carol Barrymore
 Dianne Belk** and Lawrence
 Calder Girl Scout Movement-
 wide Challenge Planned Gift
 John and Bonita Benschoter
 Jeanine Brand
 Cherie Bridges
 Miranda Brown
 Joan Cramer
 Gregg and Leigh Ann Davis
 Richard and Catherine
 Diedrichsen
 JoAnn Evenson
 Stephanie Foley
 Kathy Gilbride
 Tara Harl
 John and Laurie Hoening
 Brenda Jacobson
 Suzanne M. Keehr
 Howard and Mary Kenna
 Katie Koester
 Ed Lalor
 Steve and Peggy Laraway
 Jim and Pam Lindberg
 Jan Loebel
 Sandi Mackedanz
 Michelle Massman
 Sharon McKenzie
 Kathleen Milligan
 Emily Nahan
 Pamela K. Neet
 Margie Oleson
 Bruce and Lorraine Patton
 Tauna Quimby
 John and Jeanne Reynolds
 Rebecca Reynolds
 Judith Rothstein
 Nancy Rutherford
 Diana Salzer
 Michelle Sarazin
 Tim and Mary Schroer
 Bruce and Cheryl Skalbeck
 Mona Tedford Sharpe
 Ralph and Carol Tillitt
 Paula Tompkins
 Fred and Cathy Town
 Katrina Viegas

Michael and Diane Vosen
 Cindy Wannarka
 Mary Weyrens Tasto
 Betsy Whitlach
 Mary Wyman-Goenner

Missouri Heartland

Erik and Eva Andersen Girl Scout
 Movement-wide Challenge
 Planned Gift
 Dianne Belk** and Lawrence
 Calder Girl Scout Movement-
 wide Challenge Planned Gift
 Mary Daly
 Kara Glaus
 Lindsey Godfrey
 Linda Regan
 Anne Soots
 Savannah Stepp
 Tina Stillwell

Montana and Wyoming

Erik and Eva Andersen Girl Scout
 Movement-wide Challenge
 Planned Gift
 Dianne Belk** and Lawrence
 Calder Girl Scout Movement-
 wide Challenge Planned Gift
 Janet de Vries
 Beth Hill
 Wendy Keating
 Shelley Olson
 Al Parisian
 Leanne Woodfill

Nassau County

Erik and Eva Andersen Girl Scout
 Movement-wide Challenge
 Planned Gift
 Joanne Antun
 Cynthia Gordon Baker
 Eileen Baker
 Judith Batty
 Dianne Belk** and Lawrence
 Calder
 Dianne Belk** and Lawrence
 Calder Girl Scout Movement-
 wide Challenge Planned Gift
 Deirdre Blackmore
 Chris Bonczyk
 Rande Bynum
 Susan Caruso
 Donna Ceravolo
 Paula Davy
 Iris Dorfman
 Donna Rivera Downey
 Luci Duckson-Bramble
 Theresa and Anthony Edelman
 Judith Franzen
 Deborah Goldsmith
 Carol Gorst
 Maryse Haig



Debra Ieraci
Frank Ieraci
Wanda Jackson
Diane Last Marks
Gloria Mauter
Carlie Mendoza
Martha Naples
Carol A. Ransom
Cathy O'Reilly
Margaret Stacey
Judy Stenson
Mary VandenHeuvel
Diane White

Nation's Capital

Erik and Eva Andersen Girl Scout
Movement-wide Challenge
Planned Gift
Meg Armstrong
Jana Asher
Judith Batty
Dianne Belk** and Lawrence
Calder Girl Scout Movement-
wide Challenge Planned Gift
Anne Coventry
Margo DeLapp
Angela Carpenter Gilder
Simone Jackson
Eileen Kurucz
Barbara Hunter Mahan
Laurie Menzel
Roberta Hutchison Ostar
Dhamayanthi Pathmanthan
Sarah Phillips
Sharon Richardson
Nancy Rhyne
Patti Shapiro Slay
Mary Sprague
Tine Stone
Barbara Sutton
Susan Drew Thomas
Diane Tipton

New Mexico Trails

Erik and Eva Andersen Girl Scout
Movement-wide Challenge
Planned Gift
Dianne Belk** and Lawrence
Calder Girl Scout Movement-
wide Challenge Planned Gift
Martha Benn
Karen and Ken Bergren
Linda Deck
Marti Fournier-Revo and Terrence
Revo
Molly Garza
Mary Hockaday
Mary Homan
Peggy Sanchez Mills and Jim Mills
Christine Morgan
Constance L. and Lester J.
Reischman

Shirley and Merion Reynolds
Becky and Weldon Teague
Maribeth Thornton
Sandy Trissell
Nancy Wiggins

North Carolina Coastal Pines

Erik and Eva Andersen Girl Scout
Movement-wide Challenge
Planned Gift
Dianne Belk** and Lawrence
Calder Girl Scout Movement-
wide Challenge Planned Gift
Deborah G. Brady
Cheryl Y. Burns
Jean Carter
Beverly Cowdrick
Kristi Doebler
Cindy B. Fink
Linda P. Foreman
Poonam and Gyan Gupta
Bonnie V. Hancock
Kristen and Steve Hess
Emily K. Hill
Lois R. Hirschman
Lisa and Jeffery A.R. Jones
Marsha Kitter
Pat MacPherson
Debbi Morgan
Beth M. Norris
Jennifer and Brian Osman
Valerie Quiett
Melissa Reed
Marywalker Romanus
John F. and Wanda A. Schramm
Jodi R. Schwartz
Barbara Pickard Sirvis
Cathy Stipe
Lisa Strickland
Gail Watts
Frank and Sue Ann Westmeyer
Debi L. Willis
Lori Winkelstein
Beverly Wyckoff

North-Central Alabama

Erik and Eva Andersen Girl Scout
Movement-wide Challenge
Planned Gift
Dianne Belk** and Lawrence
Calder Girl Scout Movement-
wide Challenge Planned Gift
Pamela Copeland
Kimberly Crafton
Sarah Edwards
Kay Hayden Henderson
Paula Lott
Karen Peterlin
Jennifer Sholund
Yvonne Simms
Claudette Smith
Alice M. Williams

North East Ohio

Erik and Eva Andersen Girl Scout
Movement-wide Challenge
Planned Gift
Dianne Belk** and Lawrence
Calder Girl Scout Movement-
wide Challenge Planned Gift
Mary Lou A. Britton
Patricia Broughton
Amie and Phil Cajka
Marian R. Calvin
Jane Christyson and Bob
Mahoney
Tina Marie Collins
Laura Bailey Culp
Meredith Gray Daley
Donna M. DeFiore
Gunta Douglas
M. Elizabeth (Beth) Frank
Brenda Heidinger
Claudia W. Jones
Mona Karoghlanian
Lizbeth W. Kohler
Carole A. Krupa
Gabrielle Love
Dot MacIntyre
Leslie R. McGinnis
Debbie Minerich
Benjamin G. and Jane Norton
Margaret A. Renwand
Susana L. Rogers
Laura and Tim Schultz
Pamela Valentine
Joan P. Villarreal
Marc and Julie Weagraff
Michelle L. Weinau

Northeast Kansas and

Northwest Missouri

Beverly Albertson
Mary Ann Altergott
Erik and Eva Andersen Girl Scout
Movement-wide Challenge
Planned Gift
Miriam L. Anderson, O.D.
Marcia H. Bailey
Nancy Banta
Dianne Belk** and Lawrence
Calder Girl Scout Movement-
wide Challenge Planned Gift
Amy Bennett
Angela M. Bennett
Jean Brown
Barbara and David Bywaters
Nancy L. Copeland
Connie Davis
Bonnie Dickson
Mark Eagleton
Sylvia and Roger Fenn
Kimberly and Matthew Flynn
Lynn and Robert George
Sherry D. Gibbs

Jenny Haile
Barbara J. Hanson
Lori Hanson
Carolyn and Glenn Hodges
Tracy Hull
Ardith Hurst
Jennifer Ingraham
Vickie and Calvin Johnson
Mary Jorgenson
Janice Keeney
Lily Kelly
Joanne Kennedy
Suzanne Leyton
Catherine A. Lewis
Virginia and Lloyd Lynd
Chris McClain
Karen and Jim McGuigan
Jeannemarie C. McNabney
Judith Miller and Mary
Wentworth
Beth Montelone
Bernadette Murray
Susan Pepperdine
Stevie Reynolds and Sig Anderson
Mary and Neal Robinson
Robin Rowland
Joan R. Ruff and Dennis Wilbert
Kathleen Schatte
Judy and Steven Sherry
Stephanie M. Smith
Aleeta Spencer
Mary Tangari
Vickie Trott
Vanessa VanGoethem-Piela
Judy Vickrey
Laura Watkins
Barbara Weary
Joy Wheeler
Joann Wollermann
Cynthia Yin
Denise L. Young
Ellen Zetmeir

Northeast Texas

Kit Addeleman
Erik and Eva Andersen Girl Scout
Movement-wide Challenge
Planned Gift
Dianne Belk** and Lawrence
Calder Girl Scout Movement-
wide Challenge Planned Gift
Julie Broad
Kimberly Dixon
Debra and Steve Leven
Lynne and Allen Mabry
Katherine Maxwell
Sara Jo and David Mueller
Carolyn Parker
Brian Plunkett
Angelica Podias
Debra Roling
Christina Stenger



Northeastern New York

Erik and Eva Andersen Girl Scout
Movement-wide Challenge
Planned Gift
Dianne Belk** and Lawrence
Calder Girl Scout Movement-
wide Challenge Planned Gift
Donna Rae Gelder Bigelow
Mary and Jim Buszuwski
Craig Hilchey
Lynn Hilchey
Carol Hyde
Chandler M. Ralph and David K.
Aldrich
Valerie Trudeau
Diane White

Northern California

Erik and Eva Andersen Girl Scout
Movement-wide Challenge
Planned Gift
Katie Anderson
Lynne Armstrong
Jana and Greg Barsten
Dianne Belk** and Lawrence
Calder Girl Scout Movement-
wide Challenge Planned Gift
Diana Bell
Suzanne Bell
Jeanette Bemis
Ellen Bermingham
Frank Bette
Bonnie R. Bliss
Walter J. Bobkiewicz III
Marcie and Chet Brown
Ginger Bryant
Barbara and Miya Burbach
Samantha K. Burkey
Susan Burton and Tom F.
O'Donnell
Sara M. Cakebread
Carol L. Campbell
Leslie J. Carmichael
Stephanie Chew
Brenda H. Christensen
Susan A. Coleman
Nancy J. Corbin
Polly and Cielito B. Cortez
Arletta K. Cortright
Nancy C. Derbish
Saman Dias
Kristi Doebler
Joan M. Dove
Dorothea M. Dutton
Karen M. Eckhart
Tessa R. Ennals
Kimberly Freitas and Michael
Topper
Marian L. Gade and Jerry
Michaels
Karen Derr Gilbert
Teresa Giske

Bev and Tom Graham
Dr. Trudy Gross and Mrs. Stacey
Martinsky
Deanna Paoli Gumina, Ph.D.
Terri A. Hague
Nancy H. Handel
Michelle R. Harvey
Esther A. Heller and Nicholas A.
Corsano
Karen Helmuth
Sandy Holmes
Kathleen Horton
Carol E. Hoskins
Nancy L. Johnsen and Linda A.
Werner
Marcia Keeler
Julie A. Kimelman
Dianne Lamendola and Peter
Pavich
Jody S. Lindell
Linda E. Lococo and John K.
Conway
Michelle Luster
Pamela Mantegani
Christine Matheny
Peg McAllister
Michelle M. McCormick and Sara
Davis
Patricia and Michael D.
McGuire
Shannon M. McNath and Steve
Aja
Nancy and Kenneth Mednick
Leslie Miller
Linda Mock
JoAnne J. Neil and Robert Hritz
Charlotte and Robert W. Newman
Mary S. Okamura
Marina H. Park
Tisa Pedersen
Judy Pick and Lori Ross
Joyce A. Richards
Katherine L. Richardson
Mary Ellen Richey
Sarah Rothstein
Julie Rotolo
Erika Rottenberg
Susan Rouder
Betty Rowland
Lillian Samuel
Barbara Scheifler
Corrinne Semas
Barbara A. and Howard Shaw
Sandra Takahashi Shirai
Rebecca J. Simpson
Cea and Jack Soares
Peggy G. Soberanis
Alma Sorenson
Cherrill Spencer
Happy and Cari Lyn Stanton
Neeracha Taychakhoonavudh
Terri and Stanley Terada

Anita Thompson
Betty Tocchini
Jeanne and James Toms
Rose A. and John Triplett
Suzanne Troxel and Josh Peckler
Katherine A. Velleman
Berenice Villaseñor
Patricia J. Webb
Sara Wigh-McManis and James
McMainis
Deborah E.G. Wilder
Sherri Lewis Wood
Wendie and Henry Wu

Northern Illinois

Mark and Carol Ackerman
Carolyn Allison
Erik and Eva Andersen Girl Scout
Movement-wide Challenge
Planned Gift
Sara Ellen and James Anderson
Patricia and William Appelhans
Donna and Terry Bausman
Dianne Belk** and Lawrence
Calder Girl Scout Movement-
wide Challenge Planned Gift
Karen Brown
Penny and Kenneth Cameron
Jane E. Carter
Diane L. Collins
Fiona Cummings
Cheryl Dahl-Kearney
Rise Davis
Jody Deery
Carmen Diaz
Beverly D. Dow
Alexandra Fleig
Lawrence A. Fleig
Miriam L. Fleig
Shelleyanne and Mark Fridly
Janice I. Hann
Joyce Harrison
Marjorie Herman
Nancy L. Johnsen
Jean Kinley
Lorre La Passo
Patricia and Donald Laird
Gene Lamp
Kellyn J. Lawrence
Norm Lindstedt
Ruth and Tom Little
Emily G. Logan
Colleen Magee
Patricia McCullough
Kristie Miller
Lisa and Tim Normoyle
Kenneth Opperman
Barbara S. Pagano
Gregory and Christine Petty
Jaye and Robert Quimby
Sue K. Reimer
Tim and Bobbie Riley

Michelle Rossi
Edward and Mary Anne
Rounds
Doris Rowald
Virginia and Norman Scott
Judith Sedlack
Adella Sefrhans
Margaret Simonsen
Susan L. Speroff
June M. Stott-Kubasiak
Richard H. Strout
Kathryn Swick
Shirley A. Tudor
Cathy and Bill Veal
Dana G. Vierck
Catherine and Thomas Wilcox
Fleur and David Wright
Vicki Wright

Northern Indiana-Michiana

Erik and Eva Andersen Girl Scout
Movement-wide Challenge
Planned Gift
Dianne Belk** and Lawrence
Calder Girl Scout Movement-
wide Challenge Planned Gift
Theresa Brady
Tamarah D. Brownlee MPH
Albert J. and Rhonda Carter
Toni L. Heathman Cook
Bruce and Connie Frederick
John and Jill Frey
Lois Hess
Cynthia D. Maravolo
Eleanor and Lockwood Marine
Gail Milne
Dean and Tammy Oakes
Sharon Lynn Pohly
Kathleen and Pamela Reyburn-
Michael
Jane Webster Winnerman Shaw
Lisa Spoon
Margaret Sturm
Mark and Kathie (Oiler) Swaim
Carol Winters
Peg and Norm Yoder

Northern New Jersey

Erik and Eva Andersen Girl Scout
Movement-wide Challenge
Planned Gift
Dianne Belk** and Lawrence
Calder Girl Scout Movement-
wide Challenge Planned Gift
Robert and Esther Endres
Joy Salovitz Firshein
Adrienne Fulcher
Betty and Andy Garger
Kathie Harrington
Susan A. Harwood
Shanna Jafri
Roy Kennell



Justin and Krista Korinis
Virginia Lee Laughlin
Meral Malady
Barbara McNally
Lori Miller
Michelle Newhouse
Margaret Nicolais
Jessica Panagiotou
Lori and Paul Pimenta
Veronica Ross
Marc J. Schumacher
Candace Shanks
Jane Talpey
Helen Wronski

Northwestern Great Lakes

Erik and Eva Andersen Girl Scout
Movement-wide Challenge
Planned Gift
Victor Anthony
Mark Aptiz
Charles Aslakson
Patricia Baldwin
Ken Baur
Patsy J. Beauchamp
Deanne Behrens
Dianne Belk** and Lawrence
Calder Girl Scout Movement-
wide Challenge Planned Gift
Oscar Boldt
Evelyn Burger
Clark D. Casetta
Neil Dentzer
Alexandra Drivas
Barb Dulmes
Virginia Ernest
Diane Ford
Dawn Gohlke
Catherine Goetz
Mary Grace
Heidi Halberg
Mary Harp-Jirschele
Ann Kapitz
Marne Keller-Krikava
Susan Kohak-deCampo
Karen Kollman
Sharon Kozicki
Pat Laemmerich
Carol Ligare
Kathleen Ligare
Gail McNutt
Judy K. Nagel
Nan Nelson
Kathryn M. Nichols
Suzanne Oberhauser
Maureen O'Hern
Angela O'Kray
Mary Pekarske-Siers
Judy B. Phillips
Sharon K. Pickering
Valerie Plasky
Jan Reetz

Victoria K. Richmond-Hawkins
Carol Romback
Beth Schad
Holly Schnitzler
Carol Sorrells
Beverly Spinti
Cody Splitt
Martha Stanley
Susan and Tim Stone
Steven Taylor
Jane Thul
Sarah B. Thulin
Joanne Weber
Terry Wickman
Suzanne Worden

NYPenn Pathways

Dianne Belk** and Lawrence
Calder Girl Scout Movement-
wide Challenge Planned Gift
Nancy Calandra
Julie Dale
Judi Dixon
Angela Carpenter Gilder
Mary and Brad Grainger
Karen Hegeman
Erin Macmaster
Yolanda D. Peterson
Mike Sabo
Jane Spellman

Ohio's Heartland

Shakila Ali
Erik and Eva Andersen Girl Scout
Movement-wide Challenge
Planned Gift
Dianne Belk** and Lawrence
Calder Girl Scout Movement-
wide Challenge Planned Gift
Ruth and Wayne Cook
Nancy Cruickshank
Tracy A. Elich
Amy Franko
Kathy Lowrey Gallowitz
Eileen Goodin
Julie Holbein
Heidi Hansen McCrory
Tammy Wharton
Annette Whittemore

Orange County

Erik and Eva Andersen Girl Scout
Movement-wide Challenge
Planned Gift
Becky Bailey-Findley and Gary
Findley
Glenn and Kathryn Baldwin
Sharon Z. Barry
Leora Beck
Dianne Belk** and Lawrence
Calder Girl Scout Movement-
wide Challenge Planned Gift

The Blome Endowment
Diana and Robert Brookes
Karin L. Carlson
Beth Carroll
Barb and David Christensen
Ann Crane
Patricia L. Crane
Sophie Hall Cripe
Betsey Olenick Dougherty
Suzanne and Jeffrey Esber
Danielle Gilbert
Molly Jolly
Elizabeth Kane
Addy Lerner
Mel Little
Heather Madrigal
Gina Magee
Robyn Manzini
Nancy and Scott Nygren
Nella Webster O'Grady
Marti and Tom O'Neill
Jill Patterson
Kyra Pelachik
Barbara Powers
Victoria Shepp
Chris Shingleton
Marie L. Singer
Erin Slattery
Diana Springer
Ronda M. Sussman
BJ Watanabe and Ron Osajima
Maggie Williamson

Oregon and Southwest Washington

Scott and Mary Lee Alder
Erik and Eva Andersen Girl Scout
Movement-wide Challenge
Planned Gift
Jesse Anderson
June Asbury
Lee and Robin Babb
The Honorable Paula Bechtold
Dianne Belk** and Lawrence
Calder Girl Scout Movement-
wide Challenge Planned Gift
Mary E. Birenbaum
Anne Q. Bonn
Ruthanne Bullock
Debi Coleman
John S. Deeming
Dory Delp
Bonnie Martin Deneke
Jane E. Drew
Caralyn Fischer
Bill and Ernestine Foster
David and Mary Ann Frantz
Brandi George
Dr. Julie Gess-Newsome
Barbara Gibbs and Robert
DiFranco
Susan Groelle

Betty Hart
Sally Hart
Joanne Holland-Bak
Steve and Kathryn Hutchinson
Susanne Isom
Roberta Janssen
Jerry G. Jones
Darlene (Johns) Kelly
Betty B. Korfhage
Joan Lintz
Jennifer Liss
Katherine L. Husted Oien Loftus
Kathy I. Lucier
Kay and Dan McMurry
Shirley McNamee
Marie and Pete Melin
Pat and Dave Moss
Delanie Delimont Paasche
Karen and Kevin Padrick
Brian J. and Deborah Parmelee
Christine and David Pearson
Joanne and Marven Petersen
Amy E. Peterson
Monta M. Potter
Linda J. Quandt
Judith Ramaley
Phylis R. Rice
Shirley Ann Sagerser
Minda and Robert Seibert
Ara Serjoie
Ron S. Shaver
Rachel Shields
Dr. Kenneth and Georgianne
Singer
Eileen Skidmore
Stephanie Smetana
Kathleen Barnes Tressler
Theresa Wade
Elizabeth A. Wendlandt
Britt Williamson and Ian Taylor

River Valleys

Chris Addington
Carol Agnes
Alana Alexander
Roberta (Bobbi) and Norm Allan
Joe Ambrose
Erik and Eva Andersen Girl Scout
Movement-wide Challenge
Planned Gift
Sarah J. Andersen
Robert R. Anderson
Beverly Aplikowski
Karen O. Bachman
Stephanie Bailey
Carol Baldwin
Ann Barkelew
Erin and Andrew Barwis
Lynn Basich
Dianne Belk** and Lawrence
Calder Girl Scout Movement-
wide Challenge Planned Gift



Thomas Benson	Bryce A. Doty	Marlys E. Johnson	Elizabeth O'Mara
Dorothy Bentfield	Anne Dudek	Mary E. Johnson	Brenda L. Oseland
Anne Berberich	Catherine Edwards	Sally A. Johnson	Beatrice Ourada
Lisa Berglund	Bonnie J. Elfering	Connie Kass	Valerie H. and David E. Pace
Madeline Betsch	Mary M. Engler	Linda B. Keene	Lorena A. Palm
Carol Bierbrauer	Joyce I. Erickson	Judith Keogh	D.T. Palmer
Sharon Bigot	Peggy A. Erickson	Elizabeth M. Kiernat	Susan Amos Palmer
John Bina	B.J. Fesler	Sharon Kimble	Arete Passas
Elizabeth K. Bixby	Geraldine Floyd	Judith A. Kinsey	Margaret S. Passmore
Alexandra Bjorklund	Nancy L. Forman	Audrey P. Kintzi	Annette M. Patel
JoAnn Bogdan-Berkland	Patricia M. Frankenfield	Judith A. Kishel	Sally D. Patterson
Karen M. Bohn	Renee Fredericksen	Wendy Klager	Barbara Payne
Jane Bolenbaugh	Dana M. Frederickson	Nancy T. Klemek	Bette J. Peltola
Tisha M. Bolger	John Frederickson	Karen Klose	Kathleen C. Pickering
Margaret J. Bowles	Gerald Frodl	Marlys Knuth	Donna Pietsch
Elizabeth A. Bracken	Constance B. Fullmer	Barbara G. Koch	Joel E. Pilgrim
Karen L. Brinkman	Louise M. Gabbert	Laurie Krachmer	Linda K. Pilgrim
Richard J. Brinkman	Patience H. Gall	Kay E. Kramer	Carol Pine
Mary Ellen Brue	Rita J. Garcia	Lynn Krapf	Stephanie Pommier
Terri L. Burkel	Joan L. Gardner	Evonne M. Kremer	JoAnne Pooley
Dorothea J. Burns	Ken Garness	Joan M. Krikava	Norma Porter
Marcia J. Bystrom	Marlys Garness	Amy C. Kroll	Joanne Poss
Jean A. Carraher	Mary H. Gates	G.J. Kunau	Linda J. Rath
Jeane Carter	Gloria J. Gebhard	Margaret M. LaMont	Rodney Rath
MaryAnn Carter	Beth M. Bruger Geis	Elizabeth T. Lang	Lenore S. Ravits
Elissa Chaffee	Susan Ginder	Bereth Larson	Cynthia R. Redmon
Jennifer Charpentier	Jennifer Goering	Jerry Larson	Jeffrey A. Redmon
Rachelle D. Chase	Gayle B. Goetzman	Kathryne G. LaValley	Sharon Reece
Beverly J. Chlebeck	Janet D. Gracia	Lisa M. Lee	Shelly Regan
Bernadette Christiansen	Eileen Grundman	Jane Leitzman	Barbara P. Reichel
Donald Christiansen	Marilyn Gryc	Gail Lewis	Christine C. Reisdorf
Everett Christiansen	Jim Guentzel	Marcia K. Lockman	Bea Rocha
Paul R. Christiansen	Karen Guentzel	JoAnn Lux	Inell C. Rosario
Doris and Lorrان Church	Rose M. Gustafson	Lois M. Mack	Barbara L. Rose
Janell R. Cirkl	Hugh H. Gwin	Susan K. Mahle	Karen Rose
James Clack	Judith A. Halabrin	Alice L. Mairs	Kathryn Rosebear
Rose M. Clack	Evenelle (Evie) B. Hamlin	Sharon L. Marquardt	Joyce H. Rosene
Sandra K. Clair	Gregory Hammers	Vivian M. Mason	Kim Wolfram Salz
Judith Clayton	Nancy N. Hansen	Donna J. Mattis	Christine M. Sand
Dorothy P. Clingingsmith	Paul Hansen	Kathryn J. May	Carolyn Sandberg
Barbara Colliander	Nancy K. Hanson	Nancy Mckay	Christopher Sandberg
Carol G. Cook	Barbara Haroldson	Marilyn McLaughlin	Cindy Sanders
Lorna Olson Cooper	Jodi Harpstead	Kathleen J. McMahan	Helen M. Schadegg and Stephen J. Simmer
Kathleen H. Corley	Stan Harpstead	Karen Meade	Bonna Scherer
Judith S. and Richard F. Corson	Greg and Gayle Hayhurst	Steve and Sandy Meyer	Kathleen Scholer
Barbara Cox-Shaw	Catherine A. Heither	Kathleen A. Meyerle	Stanley Schraufnagel
Sandra L. Craighead	Debra L. Henry	Mary Mittelstadt	Linda A. Schroepfer
Shermayne L. Cross	Joan S. Henry	Mary L. Mollner	Judith M. Schuelke
Gail Cullinan	Jacqueline J. Hill	Linda Brekke Mona and David Mona	Bonita Schultz
Rose Cyert	Miriam Hof	Terry C. Moons	Penelope Scialla
Linda S. Dahm	Sharon L. Hollatz	Betsy and Jim Moore	Mary A. Seeger
Nancy Randall Dana	Marianne Holtz	Ramona A. Moore	Betty Shaw
Maryann Danforth	Marian L. Hopkins	Roberta J. Moore	Janna L. Shaw
Sara Danziger	Beverly Houts	Frank P. Morrissey	Marte J. Sheeran
Barbara D'Aquila	Ronald Ibarra	Mary-Alice Muraski	Orin Shelton
Jennifer B. Darling	Thena Iwen	Priscilla J. Nauer	Susan J. Shelton
Patrick D. Darlin	Georgene R. Jackson	Susan G. Navratil	Anne M. Sholtz
Joan Dehne	John Y. Jackson	Myrna I. Nelson	Jenifer Skjervan
Jean M. Dehning	Pearl M. Jackson	Janet L. Nethercut	Mary F. Slack
Ariel Dickerman	Lisa Jacobson	Jacqueline Nilson	Sandra L. Smith
Sandy and Nancy Berg Dickson	Shelley Jacobson	Jody Olson	Sara L. Smith
Anita J. Dittrich	Sharon Joe		



Karen J. Snedeker
 Anna M. Sollid
 Andrea K. Specht
 Douglas A. Spike
 Kaye Spike
 Janet L. Stacey
 Robert Starr
 Robin G. Stegner
 A.J. Steinbring
 Susan P. Stewart
 Elizabeth A. Strong
 Rita E. Sundberg
 Linda M. Svidal
 Janice A. Swartz
 Richard Swartz
 William C. Talen
 Ann R. Taylor
 Linda K. Teppo
 Paula Thiede
 John Thoreen
 Mary E. Thoreen
 Jen L. Thorson
 Terri L. Thorstenson
 Elizabeth Tiffany
 Patricia L. Toenies
 Jennifer A. Tonder
 Georgia K. Toogood
 Nancy Quammen Truax
 Martha (“Cuddles”) Turner
 Dolores Ullstrom
 Beth M. Voermans
 David Vosbeck
 Mardy Vosbeck
 Jane Wagemaker
 Joyce A. Walls
 Anne Walters
 Jeanne A. Walz
 Robert G. Walz
 Pauline L. Wangen
 Lauren P. Weck
 Jim Wedge
 Olive Welch
 Donna Wert
 Kristin M. Wertz
 David White
 Dawne B. White
 Emily A. White
 Maryjo White
 Debra C. Wilkinson
 Phyllis A. and Anton P. Willerscheidt
 Tony Willerscheidt
 Meredith Wills
 Joan Wisniewski
 John Wisniewski
 Donald Wolf
 JuvaLee Wolf
 Elaine Wyatt
 Mary E. Yapp
 Donna L. Young
 Mary L. Zrust
 William M. Zrust
 Jennifer C. Zvi

San Diego
 Melyn Acasio
 Meredith and Robert Alcock
 Barbara L. Alderson
 Erik and Eva Andersen Girl Scout
 Movement-wide Challenge
 Planned Gift
 Sandra Banfield
 Jeni and Elias Barajas
 Dianne Belk** and Lawrence
 Calder Girl Scout Movement-
 wide Challenge Planned Gift
 Marla B. Black
 Helen Bloomfield
 Ivy and Lee Boozel
 Merle and Mitchell Brodie
 Regina and Shea Buckley
 Christopher Carstens
 Sandra and Harry Carter
 Liza and Tony Crisafi
 Debra L. Cushman-Parrish
 The DeBello Family
 Nina deBurgh
 Carol Dedrich and Alex Nurse
 Solveig and Dan Deuprey
 Kathy Drucquer Duff and George
 Duff
 Robin and Kimberly Evans
 Anne and David Fege
 Arline M. Fisch
 Kimberly Fowler
 Zita B. Gardner
 Dr. Danell Scarborough Gavares
 Tange Tipton Gavin
 Barbara Ann and David E. Groce
 Grace Halvorson
 Marni and William P. Hayman
 Jim and Cheryl Hernandez
 Lucy and Tom Jackson
 Jo Dee and Glenn Jacob
 Rebecca James
 Susan Jeannette
 Divya Kakaiya, Ph.D.
 Shirley Kelly
 Gerry L. Keshka
 Kim and Evan Kleber
 Terry and George Klein
 Stephanie and Paul Kwiatkowski
 Sarah K. Lamade
 Janet DeGruttola Lancaster
 Makenna Lang
 Pam Levin
 Karen Linehan
 Lani and Josh Longacre
 Pamela Lynd
 Patricia Macdonald
 Elinore Mazza
 Megan Murray MacPherson
 Susan and John Major
 The Honorable Margaret M.
 McKeown
 Cindy Moore

Mimi and Mike Murray
 Sara and Anthony Napoli
 Barbara J. Norman, ChFC
 Matt and Katherine Nowak
 Justine Panian
 Kassie and James Panian
 Betty and Kenneth Peterson
 Nichole Peterson
 Kristen K. Pieper and Family
 Debra and Charles Poey
 Annie Revel
 Laura and Justin Rice
 Deborah and Michael Rider
 Patricia L. Roscoe
 Barbara Schettler-Jehl
 Nancy L. Scott
 Liz Sheahan
 Ellen Roca Single
 Kathleen Slayton
 Steven and Carol Stachwick
 Claudette and Ralph Steinhauer
 Jean B. Stewart
 Pamela Stubbs
 Katie and Dan Sullivan
 Sandy Sultz
 Pamela L. Summers
 Pearl Szymanski
 Mary Talle
 Judy Thompson
 Coralie C. Thomson
 Evelyn Mack Truitt
 Elizabeth and Andy Van Pelt
 Tammy and Louie Vener
 Kelly Waggonner
 Maggie Watkins
 Lois Weinberger
 Laura and Erv Wheeler
 Arelene E. Wolinski

San Geronio
 Erik and Eva Andersen Girl Scout
 Movement-wide Challenge
 Planned Gift
 Richard G. Aquino
 Rhesa Ashbacher
 Andrew Avery
 Edythe Avery
 Debbie Barrera
 Dianne Belk** and Lawrence
 Calder Girl Scout Movement-
 wide Challenge Planned Gift
 Carol Bond
 Michele Branconier
 Cynthia H. Breunig
 Paulette Brown-Hinds
 The Burdette Family
 Pat and Terry Caldwell
 Dr. Patricia A.S. Crowley
 Linda Dominguez
 Debra Donnell
 Sean and Melinda Dougherty
 Sally Gose

Debra Gradias
 Stacey Grant
 Knea Hawley
 Renee Hill
 Dawn Meade Keeling
 Joyce Knoll
 Elizabeth Locke-Thomas
 Lolla Long
 Chuck MacKinnon
 Kit MacNee
 Sandra L. Mayo
 Wade Mayo
 Robert Molko
 Theresa Molko
 Sylvia Morrison
 Ken and Sandy Mortensen
 Beth and Steve Newton
 Shannon Ng
 Kathy Paredes
 Cynthia Paulo
 Nancy Perdue
 Brandy Placencia
 Carrie Raleigh
 The Reece Family
 Irene N. Rodriguez
 Ann Marie and Matt Sakrekoff
 Katheryn E. Sari
 Bob Schumacher
 Tina Schumacher
 Gail A. Seekins
 Kristina Sewell
 Barbara Pickard Sirvis
 D. Scott Thompson
 Susanne Tisdall
 Donna “Whisper” Tucker-Parker
 Pam Verhaegen
 June Yamamoto
 Wendy Zinn

San Jacinto
 Erik and Eva Andersen Girl Scout
 Movement-wide Challenge
 Planned Gift
 Barbara S. and Bill Barnes
 Dianne Belk** and Lawrence
 Calder Girl Scout Movement-
 wide Challenge Planned Gift
 Debra Benditz
 Marilyn Biles
 Donna F. Cole
 Kay K. Craig
 Ellen R. DeSanctis
 Marlene M. Edwards
 Genevieve Erdbruegger
 Thea M. Fabio
 Emily P. George
 Susanne M. Glasscock
 Dorothy M. Goodykoontz
 S. Pilar Grantham
 Delores J. Hinkle
 Elizabeth and James K. Hutchison
 Jean Janssen



Sandra N. Kuykendall
Lee Lieder
Kate W. and Kenneth A. Marx
Ida Pearl McDonald
Nancy McGuire
Mary B. McIntire, Ph.D.
M. Anne Murphy
Twig Muzacz
Yvonne Myles
Marianna E. Olivarez
Mary Jo Pointdexter
Anita Riddle
Melanie Rippentrop
John and Paul Roberts
Lori J. Roberts
Mary K. Ryder
Beth Shea
Margaret S. Sheriff
Nancy and Bud Simpson
Aimee Sproles
Katherine M. Tamer
Jamie Vazquez
Carol G. Victory
Louise Villejo
Mary M. and Mike Vitek
Nancy Walker
Genevieve Walls
Pamela Wiggins
Cathy Wining-Thomas

Sierra Nevada

Amber and Kyle Aiton
Erik and Eva Andersen Girl Scout
Movement-wide Challenge
Planned Gift
Dianne Belk** and Lawrence
Calder Girl Scout Movement-
wide Challenge Planned Gift
Cookie Bible
Paula Cady
Christine Casey
Laura Chappel
Denise Chavez
Donna Childs
Chris Coffing
Karen Culp
Pam and Mike Czyz
Kyle Davis
Lisa Dernbach
Lynda di Caro
Cyndi Fehler
Melissa Flatley
Katherine Godbey
Wendy Hamilton
Amber Joiner
Liz Keene
Debbie Lambin
Rachael Lambin
Marian Lanius
Steven and Valerie Lease
Caroline Mathes
James Mathes

Carol Merideth
Jean Merkelbach
Anita Nelson
Julia Ratti
Maureen Smercina
D. Scott Thompson
Pat Tripple
Pam Verhaegen
Jo West
Sheryl Westad
Colleen Worlton
Vicki N. Wright
Kaitlin Young

Silver Sage

Erik and Eva Andersen Girl Scout
Movement-wide Challenge
Planned Gift
Brenda Ballantyne
Dianne Belk** and Lawrence
Calder Girl Scout Movement-
wide Challenge Planned Gift
Joan Burke
Janet Callahan
Jerry Finnegan
Christina Kang
Amanda LaMott
Elaine Leedy
Connie Miller
Jeanmarie Pattan
Kathy Peter
Pat Pyke
Lori Smith
Joanne Taylor
Leatha Thayer
Jeff Thomson
Maggie Williams
Holli Woodings

South Carolina Mountains to Midlands

Erik and Eva Andersen Girl Scout
Movement-wide Challenge
Planned Gift
Carolyn Babb
Dianne Belk** and Lawrence
Calder Girl Scout Movement-
wide Challenge Planned Gift
Charlotte Berry
Ruth Cate
Penny Kay Cooper
LaTanza Duncan
Rebecca Lever
E. Meredith Manning and Robert
E. Stepp
Karen Mitchell
Lesley R. Moore
Tamar Paltrow
Judy C. Simpson

Southeast Florida

Erik and Eva Andersen Girl Scout

Movement-wide Challenge
Planned Gift
Ahlam Askar
Dianne Belk** and Lawrence
Calder Girl Scout Movement-
wide Challenge Planned Gift
Claudet Benton
Laura Brihn
Jennifer Busby
Jonna Circe
Heather Hileman
Lisa Johnson
Felisa Miles
Sara Nunez
Nancy Proffitt
Geraldine Rudewicz
Debbie Wysocki

Southeastern Michigan

Adeline Adams
Erik and Eva Andersen Girl Scout
Movement-wide Challenge
Planned Gift
Suzanne Banty
Dianne Belk** and Lawrence
Calder Girl Scout Movement-
wide Challenge Planned Gift
Kathie Booth
Denise Dalrymple
Julie Dawson
H. Halladay Flynn
Peter Keating
Grace Kleinpell Trust
Gloria Lara
Bettyrae Malsom
Elaine Marcotte
Denise Minoletti
Kathy Ossian
Nancy Philippart
Pansy Lee Reeder Trust
Heather Rivard
Linda Rivard
Kathy Weaver
Donna J. Will
Dorothy Dalee Willison

Southeastern New England

Carroll S. Adams
Erik and Eva Andersen Girl Scout
Movement-wide Challenge
Planned Gift
Susan E. Anderson
Stefanie Argus
Nancy Armstrong
Karin N. Aukerman
Barbara J. Barber
Dianne Belk** and Lawrence
Calder Girl Scout Movement-
wide Challenge Planned Gift
Grace M. Donnelly
Mary E. Durfee
Betty P. Faella

Barbara J. Feyler
Elsie J. Foy
Martha M. Frutchey
Michele A. Gariepy
William R. Howard
Pamela Hyland
Margery E. LeBeau
Anne K. Meeker
Miriam E. Montag
Diane L. Pelrine
Lianne C. Pinheiro
Terri Pitt
Elizabeth C. Rowland
Kristin E. Scribner
Barbara C. Smith
Pamela Grills Stein
Susan Steiner
Julie Sygiel
Frances M. Tallman
Barbara M. Wallace

Southern Alabama

Erik and Eva Andersen Girl Scout
Movement-wide Challenge
Planned Gift
Henry and Gigi Baroco
Dianne Belk** and Lawrence
Calder Girl Scout Movement-
wide Challenge Planned Gift
Drs. Donald and Cheryl Bogie
Elizabeth P. Braswell
Ellen I. Brooks
Janie Corlee
Robert and Pat Edington
Barbara Gilewicz
Harriet Hessam
Marianne W. Terry

Southern Appalachians

Erik and Eva Andersen Girl Scout
Movement-wide Challenge
Planned Gift
Dianne Belk** and Lawrence
Calder Girl Scout Movement-
wide Challenge Planned Gift
Tamara Boyer
Lynne Fugate
Jennifer R. Knight

Southern Arizona

Erik and Eva Andersen Girl Scout
Movement-wide Challenge
Planned Gift
Marissa Arendt
Dianne Belk** and Lawrence
Calder Girl Scout Movement-
wide Challenge Planned Gift
Denise Birger
Casey Caylor
Karyn Damschen
Suzanne Diaz
Nancy Farina



Terry Flores
Kristen Garcia-Hernandez
Suzanne, Fred, and Jennifer Gust
Ellen Howlett
Bette Johnson
Susan Krahe-Archibald
Jill Long
Emily Morrison
Timalee Nevels
Cynthia Petti
Debbie Rich
Dorothy Rothwell
Nancy Schneider
Marsha "MacGyver" Tank
Gloria Tileston Tharp
Pamela Traficanti
Nanette Warner
Linda Weigel-Firor

Southern Illinois

Erik and Eva Andersen Girl Scout
Movement-wide Challenge
Planned Gift
Gordon Cohen Trust
Geary Family Charitable Trust
P. Anne Haltenhof
James Handley
Charles and Mary Lukas Trust
Edna and Emma Sawyer Trust
Bertha and William Yoxall Trusts

Southern Nevada

Janice Allen

Southwest Indiana

Erik and Eva Andersen Girl Scout
Movement-wide Challenge
Planned Gift
Carol A. and Bruce H. Baker
Dianne Belk** and Lawrence
Calder Girl Scout Movement-
wide Challenge Planned Gift
Kelly Birkhead
Dr. Marie A. Bussing
W.C. Bussing, III
Nancy Byrd
Janice K. Davies
Donna Decker
Sharon Gillen
Nancy Habig
Susan C. Huck
Suzanne Hunter
Susan M. Longest
Cassie Major
Valerie McKinney
Barb Jones Moore
Karen Selby
Aimee Stachura

Southwest Texas

Erik and Eva Andersen Girl Scout
Movement-wide Challenge

Planned Gift
Dr. Sarah Baray
Dianne Belk** and Lawrence
Calder Girl Scout Movement-
wide Challenge Planned Gift
Sally and Charlie Cheever
Foundation
Jeannie Frazier
Adrienne King
Patricia Pelton
Magdalena P. Valdez
Suzanne Allford Wade

Spirit of Nebraska

Misty Ahmic
Erik and Eva Andersen Girl Scout
Movement-wide Challenge
Planned Gift
Dianne Belk** and Lawrence
Calder Girl Scout Movement-
wide Challenge Planned Gift
Charlotte Brown
Lilian Burkhalter
Elizabeth Campbell
Jenny Cardwell
Theresa Cassaday
Susan Chenoweth
Dorothy Brazil Clark
Anabeth Hormel Cox
Rita Jean Fleischer
Lori L. Frank
Kay French
Bob and Charlene Gondring
Helene Grgurich
Wendy Hamilton
Pam James
Norman Jewell
Stacy Jolley
Deborah J. Keating
Fran Marshall
Karen Morey
Pat and Pat Norris
Marie Odgers
Jane Palmer
Barbara and Ray Pille
Barbara and Ben Rader
Kassie Riordan
Sharon Robino-West
Dawn Rockey
Peggy Roit
Dalyce Ronnau
Lynne and Bart Ruth
Helen Saathoff
Deborah Salansky
Sue Schreiber
Susan Seidel
Coleen Seng
Joann Ward
Sandra Washington
Donna West
Linda and Ed Willis

Suffolk County

Erik and Eva Andersen Girl Scout
Movement-wide Challenge
Planned Gift
Dianne Belk** and Lawrence
Calder Girl Scout Movement-
wide Challenge Planned Gift
Nalini Durgana
Willard Grant
Sarah McCandless
Tammy Severino
Donna and Val Smeland
Gus T. Viras

Texas Oklahoma Plains

Dianne Belk** and Lawrence
Calder Girl Scout Movement-
wide Challenge Planned Gift
Becky Burton
Jerie Hewitt
Yvonne Coleman Lowrie
Pat Miller
Karen Perkins
Ada Rummel

Tropical Florida

Erik and Eva Andersen Girl Scout
Movement-wide Challenge
Planned Gift
Dianne Belk** and Lawrence
Calder Girl Scout Movement-
wide Challenge Planned Gift
Patricia Cruz
Eliza Fendell and Jeffery A. Oberg
Johnette Hardiman
Nancy Pastroff
Debra Reyes
Elsie Romero and Jack Plunkett, Jr.
Lilian Walby
Chelsea Wilkerson
Peggy Wingard
Angelica Zayas

Utah

Erik and Eva Andersen Girl Scout
Movement-wide Challenge
Planned Gift
Dianne Belk** and Lawrence
Calder Girl Scout Movement-
wide Challenge Planned Gift
Barbara Bentley
Richard Blaylock
Sandra Brown
Margy Campbell
Peeches Cederholm
Drusilla Copeland
Joelle Creager
Linda (Sue) Dickey
Lois Fitzgerald
Alida Hannum
The Hardin-Reynolds Family
Carolyn (Marzz) Johnstone

Joshua Jones
Guy Knight
Caryl March
Melissa Matthews
Matthew Milton
Lisa Mortensen-Timoteo
Debbie Nielson
Margaret Renwand
Anita Riddle
Noreen Rouillard
Brenda Scheer
Steven Schmidt
Erin Stone
Sarah Waters
Tamara Woodbury

Virginia Skyline

Erik and Eva Andersen Girl Scout
Movement-wide Challenge
Planned Gift
Dianne Belk** and Lawrence
Calder Girl Scout Movement-
wide Challenge Planned Gift
Helen Ruth Burch
Holly Gardner Drewry
Kate Genaitis
Diane Grant
Gail Hassmer
Donna Holden
Patricia McMahon
Jennie Sue Murdock
Amberleigh Powell
Kerri Smith
Nikki Williams
Chris Wllson

West Central Florida

Kay Anderson
Charles Barton
Alice and Ryan Benefiel
Christine Cartaya
Carol C. Carter
David Chambers
Barbara A. Flasch
Jean H. Gibson
Felecia Gilmore Long
April R. Grajales
Phyllis Lubbers
Jessica Muroff
Nancy Nunn
Denise Samson
Stephanie and Todd Wilson

Western New York

Erik and Eva Andersen Girl Scout
Movement-wide Challenge
Planned Gift
Nicole L. Andrews
Dianne Belk** and Lawrence
Calder Girl Scout Movement-
wide Challenge Planned Gift
Lisa S. Schreiner Berta



Diane Bockrath
 Mary Lou Briton
 Jennifer L. Brooks
 Linda Bumgardner
 Katherine A. Campbell
 Lettie J. Chilson
 Susan and Clayton Cloen
 Wendy S. Cohen
 Judith A. Cranston
 Laura DeConinck
 Donna M. Dolce
 Cynthia J. Erickson
 Kara Fraser
 Joan H. Frazier
 Judy G. Gardner
 Patricia A. Garnjost
 Lisa Goodell
 Nancy S. Grimes
 Katelyn R. Grodecki
 Sally A. Guthrie
 Marian L. Herz
 Eileen Hettich
 Jerilyn J. Hickey, CFRE
 Jean E. Hitchcock
 Suzanne K. Isgrigg
 Diana Warren Kubick
 Karen Lundgard
 Joelle M. Maurer
 Lnette McGovern
 Jean McGowan
 Cheryl Messoro
 Dawn Myers
 Joanne Nelson
 Samantha Nichols
 Lynnette Haley O'Stewart, Ph.D.
 Judith Penzotti
 Paula Pickett
 Georgiana Prince
 Patricia Raab
 Heather E. Reed
 Beverley Rhodes
 Patrice Sampson-Bouchard
 Ann L. Sartwell
 Jennifer Schlick
 Laura Schulitz
 Michele and Paul Smith
 Bette Stonebraker
 Sue C. Sweet
 Elizabeth W. Thorndike
 Donna Vanstrom
 Alison J. Wilcox-Lanfear and
 David Lanfear
 Rose Anne Woodard

Western Ohio

Harry and Rita Adler
 Erik and Eva Andersen Girl Scout
 Movement-wide Challenge
 Planned Gift
 Carolyn Antoszewski
 Marjory Baer
 Dianne Belk** and Lawrence

Calder Girl Scout Movement-
 wide Challenge Planned Gift
 Jeanne Bernish
 JoAnn Bertram
 Barbara J. Bonifas
 Judith Hallerman Borie
 Catherine Buck-Kennedy
 Mary Burdett
 Michelle Burdett
 Elizabeth Burridge
 Maria Carver
 Maria Cholak
 Jeanne Gail Conrad
 Suzanne Costandi
 Denise and Brent Cross
 Becky Crowley
 Rhonda Curtis
 Meredythe Daily
 Nancy Dawes
 Claire Dell
 Janet Dobo
 Marcia Dowds
 Joanna Fara
 Donna Farrell
 Kim Fender
 Erin Focke
 Laura Ford-Harris
 Donna Freeman
 Vicki Gardner
 Anne Gibbons
 Dana Glasgo
 Angela Granata
 Wendy Gustafson
 Christine Gustin
 Diana Hackenberg
 Ann Hartmann
 Mary Haskamp
 Mikell Hedley
 Shelly Helscher
 Erin Horsley
 Margaret Houck
 Jacqueline Humphries
 Ellen Iobst
 Ardenia Jones-Terry
 Kathleen Kearns
 Gail Kesterson
 Pamela King
 Mary Ann Knoop
 Claire Kubiak
 Allison and Peter Kwasniak
 Elizabeth LaMacchia
 Roni Luckenbill
 Marian K. May
 Susan Gantz Matz
 Deb McLaren
 Lydia McMillen
 Kathy and Rodney McMullen
 Marie Michel-Tucker
 Beverly M. Miner
 Marjorie Motch
 Cathy Spaeth Muterspaw
 Judy Myerholtz

Cheryl Newton
 Susan Osborn
 Evelyn Pelan
 Doris Ponitz
 Barbara B. Pope
 Irma Porter
 Vicki Proctor
 Kathryn Randall
 Gayle Rapien
 Zo Redman
 Susan Redman-Rengstorf
 Leslie Rich
 Jennifer Rippy
 Jan Rook
 Heather Ryall
 Emalee Schavel
 Susan Schonauer
 William Schretter
 Jean Sims
 Sandra Skinn
 Jeanette Smith
 Carol Sommers
 Julia Spohr
 Mary and Leroy Staples
 Rosemary Stewart
 Angela Tennaro
 Kelly Trame
 Elizabeth Vessel
 Jody Wainscott
 J. Jean Ward
 Kenneth Wesp
 Christi M. West
 Beth Wyckoff
 Saundra Young

Western Oklahoma

Erik and Eva Andersen Girl Scout
 Movement-wide Challenge
 Planned Gift
 Dianne Belk** and Lawrence
 Calder Girl Scout Movement-
 wide Challenge Planned Gift
 Lindel Evers
 Shannon Evers
 Kay Goebel
 Shirley K. Harrison
 Joan Maguire
 Steve Mason

Western Pennsylvania

Erik and Eva Andersen Girl Scout
 Movement-wide Challenge
 Planned Gift
 Marcia Barber
 Dianne Belk** and Lawrence
 Calder Girl Scout Movement-
 wide Challenge Planned Gift
 Theresa Bone
 Dorothy Brookes
 Patricia Burkart
 Missa Murry Eaton
 Victoria Kush Esq.

Lois Kuttesch
 Mary Putnam
 Martha Smith
 Jerry Gordon Weinheimer

Western Washington

Shirley Adams
 Erik and Eva Andersen Girl Scout
 Movement-wide Challenge
 Planned Gift
 Arlene Angle
 Howard Aoki
 Darlene Baird
 Odie Bargmeyer
 Victoria Ballard
 Molly Barker
 Laura J. Barlow
 Shirley Castaneda Barrera
 Lois Bauer
 Dianne Belk** and Lawrence
 Calder Girl Scout Movement-
 wide Challenge Planned Gift
 Bernie Bell
 Robin Belson
 Del Hoskins Bennett
 Virginia and Jim Bennett
 Rachelle Blake
 Lois and George Blanks
 Jane Boubel
 Debbie and John Bowden
 Kim Brewer
 Christie Brown and Luisa Motten
 Nicole Brown
 Barbara Burke
 Joyce Butkus
 Sheryl Chiang
 Deanna and James Claypool
 Christine M. Coble
 Ann Copeland
 Bob Cox
 Kelly R. Crosson
 Heather Cutting
 Annette M. Dailey
 April Davis
 Cynthia E. Derrick
 Carol DeVos
 Val DuMond
 Jennie Duncan
 Margaret "Kit" Ellis
 Patricia Elwanger
 Jean Ferries
 Sheldon and Kimberley G. Fisher
 Jill Floberg
 Patricia A Folsom
 Becky Fontaine
 Pat Ford
 Samantha Franklin
 Senator Karen Fraser
 Sarah Frisch
 Lydia Garrett
 Donna Gathany
 Patricia Gatie



Lee Golden and Donald Carling
Patricia A. Goodhind
Cynthia Gose
Mr. and Mrs. Ellen Govan
Dorothy Grether
Julianna C. Griffin
William Gustaveson
Amy Hall
Laura and Doug Hall
David Hamilton
Vee Harper
Carrol Harris
Tina Hellriegel
Lorayne Hendrickson
Dave and Nancy Herzog
Nancy Hewitt
Billie Holloway-Cook
Donna Horn
Kathleen M. Houston
Barbara Huber
Francie Huhndorf
Patricia Connors Jalbert
Terry Ann Jankowski
Joanne Johnson
Sharon Frey Jones
Karen Sue Karnes
Kelly Keesee
Virginia A. Kight
Diana Klein
Ann Kruse
Karyn Livingston
Paula Lowe
Katelyn Lowthorp
Stacey Lowthorp
Patricia M. Luhr
Barbara Jean Markovich
Carlyn Matson
Nanette L. McCann
Geeta and Chris McCormick
Carol McMillan
Susan McNab
Dawn and Mikayla Mehelich
Patti and Mike Meyers
Joan Milasich
Carol J. Miller
Randa Minkarah and Scott Mullins
Gloria J. Morehouse
Aurica Morrison
Kari and Darren Murphy
Dorothy Nelson
Cindy Niemi
Theresa Northcutt
Mae Numata
Chloe Palmer
Penny Palmer
Dr. and Mrs. Joyce Ann Perko
Chris and Michael Pfaff
Gwen and Phillip Phibbs
Sheryl L. Pond
Paige Porter
Luise Potter

Robert Preble
MaryEllen Priedeman
Jeannette M. Privat
Diana Prkut
Sondra Purcell
Kasydy Radice
Sue Ramsey
Audrey Reisdorf
Dianna Robb
Jan Robinson
Sandy Saffell
MaryJane Sainsbury
Judy and Robert Schroeder
Glenda Schuh
Lynda Schupp
Marion Sharp
Sandy Short
Pat Siggs
Leslie Smith
Libby Ann Smith
Marilyn and Cal Smith
Barbara A. Sparks
Karen Stay
Cherie Stedman
Sue D. Stibbe
Cynthia Stimpson
Jeffrey, Nan, and Kelsey Stonestreet
Heather Fitzpatrick Sturgill
Brenda Suiter
Kathy Suits
LaVerne Talbott
Dorothy Thirtyacre
Estate of Beatrice A. Thompson
Debra Thompson
Michelle Tieskie-Jones
Darleen Vernon
Elaine Vogt
Patty Voros
Michele Vossler
Karan Waterman
Ann and Martin Webster
Ada Lou Wheeler
Carol Wheeler and William Willard
Debbie Whidden
Luella White
Doreen and George Whitlock
Marian L. Wilson
Ann and Donald Wing
Stephanie Winters
Nancy Wittenberg
Gretchen Zatarain
Peggy Jo Zimmerman

Wisconsin Badgerland
Erik and Eva Andersen Girl Scout Movement-wide Challenge Planned Gift
Dianne Belk** and Lawrence Calder Girl Scout Movement-wide Challenge Planned Gift
Susan E. Fischer

Margaret M. Gratten
Margaret Henderson
Mary H. Klos
The Wayne and Hildy McGown Fund
Karen E. Peterson
Cindy Rosch
Philip Selgren

Wisconsin Southeast
Mary Albrecht
Barbara Alderson
Lillian Allen
Erik and Eva Andersen Girl Scout Movement-wide Challenge Planned Gift
Leona Atley Estate
Elaine and Steven Azuma
Mary Lee Bahr
Betsy Barr Fund
Kathy Barth
MaryPat Beals
Dianne Belk** and Lawrence Calder Girl Scout Movement-wide Challenge Planned Gift
Elizabeth Bell
William Benjamin
Nicole J. Best
Karen and Mark Bitzan
Roseann Bladauf-Shales
Diane and Dennis Block
Christy L. Brown
CW Brown Trust
Elizabeth Brown
Christine Bukowski
Mary Bullamore
Susan Cable
Cheryl Campbell
Julie Whelan Capell
Newton J. Christoph Trust
Diane Conrad
DeVona Wright Cottrell
Mark and Clare Cronce
Rita Czukas
Marianne Deabler
Jamie Dertz
Martha and Norm Eckstaedt
Deidra Y.A. Edwards
Mary Palmer Enroth
Sarah Fuerstenau
Molly T. Fuller
Debra Fulton
Jane A. Gallant Revocable Trust
Jane Mann Gellman
Joanne Graham
Donna Hansen
Pat and Lee Hartz
Mary and Richard Henszey
Claire Hiller
Kerrie Hoffman
Carol and Don Huebler
Annette Ishmael

Gwen Jackson
Laurie Jacobs
Barbara Jakus
Marilyn W. John
Cathie and Dave Johnson
Earlene Jornt-Girman
Pamela Kandziora
Bernard and Karen Kubale
Mary Kubale
Susan L. Kurtz
Katherine Lingle
Serge Logan
Mary Beth Malm
Nancy and Joseph Mathews
Mary McCormick
Robin R. McCraw
Sandra McNeely
Delores Melito
Sylvia Moldenhauer
Margaret Moore
Lee Morriss
Jenny D. Nelson
Nancy Noeske
Sheila Porter
Martha and John Prince
Alice Read and Dr. Drew Palin
Marion Chester Read
Agnes Reinhard
Anita Rodriguez and Kenneth Kauer
Mary Roggeman
Esther G. Runkel Estate
Jeanne Sanchez-Bell
Rose Purperero Sang
Mary and Philip Schuman
Carol A. and Norman Seeger
Betsy Seidenschwartz
Barbara Wyatt Sibley
Wendy Slocum
Rose E. Spang
Deborah Taylor
Marilyn Terder
Kim Thiermann
The Bethany W. Thompson Family
Carita Twinem
Deborah T. Wallendal
Deborah Weaver
Gertrude Wilkinson
Clara Wulffing
Mary Jo Zachow
Ellen Ellefsen Zetmeir



Contact Us

Girl Scouts of the USA
420 Fifth Avenue
New York, New York 10018
girlscouts.org

